

DUBBO REGIONAL THEATRE
AND CONVENTION CENTRE



BECOME A TAKE 3 SEASON SUBSCRIBER!

1 Pick and pay for a package of three (3) Season shows to unlock extra discounts throughout 2022.

2 Get exclusive access to book the best available seats before they go on sale to the public.

3 Snap up discounts on dining and accommodation with our hospitality partners (conditions apply).

4 Smile and save when booking additional shows listing a Subscriber price (for your use as a Subscriber only).

5 Exchange tickets from a Season show to a different Season show with a no-fee swap.

6 Share the love and upsize your Subscription with a TAKE 3 DEAL.

7 Score a complimentary ticket to the annual Season Launch.

WELCOME TO 2022

I am delighted to welcome you back to Dubbo Regional Theatre and Convention Centre (DRTCC), the jewel in the crown of the region's live events, performance and entertainment venues. The 2022 Season is simply bursting with a great line-up that is set to keep you all entertained and wanting an encore!

Firstly, I'd like to thank our patrons and sponsors for their support during a challenging 2021 Season. It was great, and very heartening, to see such terrific (COVIDSafe) audiences enjoying sell-out shows for events like: Mark Vincent, John Williamson, *The Very Hungry Caterpillar*, *Bluey's Big Play Live!* (5 performances), *Melbourne International Comedy Festival*, *Carmen* by Opera Australia, *Human Nature*, and *Mamma Mia!* by Dubbo Theatre Company (8 performances) to name a few.

Theatregoers this season can expect to be wowed by an impressive line-up of some 22 productions. All of them designed and presented to thoroughly entertain you, all of them unmissable shows – make sure you get your tickets.

I'm also pleased to see quality programming being extended to Wellington Civic Centre, which successfully hosted comedy and family shows in 2021. For 2022, you can expect more concerts, cabaret, school shows and The Wiggles.

All of this great live entertainment – last season, this season and beyond – is largely thanks to our fantastic sponsors, all of whom deserve a standing ovation: Kings Hall Jewellers, David Payne Constructions, Astley's Plumbing and Hardware, O'Briens Electrical, Dubbo Dental, Petries Mitre 10, and Burgun and Williams Optometrists.

It goes without saying, our community is fortunate to have a fabulous facility like DRTCC and its wonderful staff, especially during a time of crisis – like a pandemic. While the curtain may have temporarily fallen on our shows during COVID-19, the staff and the venue have been critical in supporting our community as a NSW Health and Australian Defence Force vaccination clinic, food hamper distribution base for our at-risk community members, and mobile testing headquarters during lockdown. I think this is a terrific example of your Council facilities and staff demonstrating great versatility and responsiveness – what our community needs and expects in crisis.

For the 2022 Season, enjoy the great facility and enjoy the shows. To all of our performers and artists – great to have you back!



MURRAY WOOD
CEO
Dubbo Regional Council





In 2020, it was all about *celebrating* winning awards and DRTCC hitting the 10-year milestone. In 2021, we wanted to *colour your world* with a kaleidoscope of vibrant touring shows. *Take 3 - This is it!* We will deliver our 2022 Season in its entirety packed with extra cabarets, dance and comedy. We encourage you to *Take 3* shows to become a Season subscriber and value add with any *Take 3* ticket deals on selected shows. It's time to get excited to go out again, meet up with friends and family and recapture that anticipation when the house lights dim, mobile phones are switched off and the stage lights come up.

It has been a stop-start couple of years in the events industry, with theatres world-wide impacted by border restrictions, capacity limits, lockdowns and seasons cut short. We curated an amazing array of quality productions to provide the ultimate live performance experience and when it was good, it was very good - sell out shows, rave reviews and beaming faces on social pages. When everything was at a standstill, it was disheartening for all.

It has also been a challenging couple of years for the local business sector due to the pandemic. More than ever, we are truly grateful for the support of our community-minded sponsorship family - Top Hat Sponsors, David Payne Constructions and Marie Astley, Season Launch Sponsor, Kings Hall Jewellers and our Curtain Raiser Sponsors, Petrie's Mitre 10 Dubbo and Burgun and Williams Optometrists. A special shout out, with a sparkling smile, to Dubbo Dental who have come on board as our new Chorus Line Sponsor. Our sponsors believe in the value of the arts and their generosity supports our artistic program to ensure regional audiences have access to productions that our metropolitan centres have at their doorstep.

To you, our valued patrons, who have shown grace and patience throughout the year, please take a seat; *Take 3* will deliver the live theatre experience you have been yearning for. *On with the show - this is it!*

L. Christof

LINDA CHRISTOF
Manager
Dubbo Regional Theatre and
Convention Centre

K Hague

KIM HAGUE
Manager
Regional Events



MESSAGE FROM OUR SEASON LAUNCH SPONSOR



KINGS HALL JEWELLERS

We are thrilled to once again partner with Dubbo Regional Theatre to present the 2022 Season. What a year it has been! At Kings Hall Jewellers our vision statement is - Where exceptional, is the everyday standard. That's why we have built an enduring relationship with the award-winning Dubbo Regional Theatre. The team there strive for excellence every day to ensure an enjoyable and memorable Theatre experience for everyone. Even during lockdown, Theatre Manager, Linda Christof, stayed connected to sponsors with updates, anecdotes and brand exposure. There was regular communication with patrons and all stakeholders about show updates, team activities as well as witty social media posts. We know you are in safe hands.

The 2022 Season program is unmasked and bursting at the seams with concerts, dance, drama, family shows, cabaret, opera and loads of comedy. There is such a diverse range of shows to choose from.

From all of us at Kings Hall Jewellers, we are proud to officially launch the 2022 Season and look forward to seeing you at the Theatre. *Take 3, this is it!*

STUART GOULD
Kings Hall Jewellers

TOP HAT SPONSORS



**MARIE
ASTLEY**

CHORUS LINE SPONSOR



CURTAIN RAISER SPONSORS



HOSPITALITY PARTNERS





CONCERT

SATURDAY 29 JANUARY, 4PM

Dale Burridge

AT THE CROSSROADS

Co-written by Dale Burridge and Martin Crewes

Directed by Martin Crewes

Musical Director: Bev Kennedy

Burridge is back on the boards and at the crossroads.

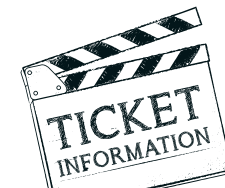
After an absence of more than twenty years, one of our true leading men, and the original Raoul in the 1990 Australian premiere production of *The Phantom of the Opera*, Dale Burridge returns to the stage with a funny, moving, heartfelt exploration of the highs and lows of a life spent on, and off, the boards.

This deeply personal and intimate piece covers Covid, bullying, sexism, ageism, and depression and above all is a tale of survival and an exploration of



the many twists and turns of a life spent in 'the biz!' Showcasing Dale's powerhouse vocal talent, this show incorporates songs from many of the world's best-loved musicals: *The Phantom of the Opera*, *The Sound of Music*, *Les Misérables*, *Anything Goes*, *Oklahoma*, *Dr Doolittle*, *Scrooge*, *Chess*, *The Roar of the Greasepaint*, *the Smell of the Crowd*, *Man of La Mancha* and more.

"Can the Man Sing, or Can the Man Sing"
Melbourne Age



Subscribers	\$50
Adult	\$60
Concession	\$53
Youth	\$25
Group 8+	\$55
Age Guide: 18+ years	

Warning: Performance may contain coarse language

**MARIE
ASTLEY**





COMEDY

TUESDAY 15 FEBRUARY, 8PM

Soft Tread

THE WHARF REVUE: CAN OF WORMS

Created and written by Jonathan Biggins,
Drew Forsythe and Phillip Scott

It's been over twenty years since the Wharf Revue burst on the scene with its satirical take on our interesting times. It has been skewering our political leaders to hilarious effect ever since, with its annual all-singing, all-dancing offering of sketches, monologues and impersonations.

Join the regular crew of Jonathan Biggins, Drew Forsythe and Phillip Scott - along with their figurehead

of talent, Mandy Bishop - as they bravely set out to sea once more and voyage to the bottom of the barrel. All hands on deck for a daring adventure as they navigate the dire Straits of Covid, sail round the treacherous Horn of Scomo, steer well clear of the empty Cape of Pauline, only to be becalmed in the Nationals Bermuda Jacket Triangle before stumbling across a New World, filled with hope and promise! Or not.

THE WHARF REVUE

CAN OF WORMS

"So hysterical that twice I was brought to tears - an activity usually reserved for funerals, Puccini and hitting my thumb with a hammer."

Sydney Morning Herald



ARTS
ON TOUR



NSW
GOVERNMENT



Australian Government



Australia
Council
for the Arts



SOFT TREAD



Subscribers	\$47
Adult	\$57
Concession	\$50
Youth	\$29
Group 8+	\$52
Age Guide: 15+ years	

Warning: May contain strong language and adult themes

**MARIE
ASTLEY**



Photo Credit: Brett Boardman



FAMILY AND YOUTH

TUESDAY 8 MARCH, 12PM, 6PM

WEDNESDAY 9 MARCH 10.30AM

CDP Kids presents

GUESS HOW MUCH I LOVE YOU

A play by Richard Tulloch

Adapted from the books by Sam McBratney and Anita Jeram

"I love you right up to the moon -
AND BACK"

Join the enchanting adventure of Little and Big Nutbrown Hare as they discover the magic and colour of the seasons, in a dazzling new stage adaptation of Sam McBratney's beloved children's book *Guess How Much I Love You*.

This playful story of love and nature unfolds on stage in a show that's fun for the whole family, with beautiful puppetry, music and laughter for children aged 3 years and up.



Brought to life by CDP Kids, the team behind the Australian tours of *The Gruffalo*, *The Very Hungry Caterpillar Show* and *Spot*, this family favourite will excite, educate and entertain new readers and first-time theatre-goers. Don't miss out!

"We are so excited to be bringing *Guess How Much I Love You* to Dubbo. CDP has a long history of bringing shows to the region and we always look forward to the warm reception we receive."

Yolande White

- Director, CDP Theatre Producers

cdpKids



Australian Government
RISE Fund



Auslan Interpreted



Subscribers	\$22
Adult	\$26
Concession	\$24
Youth	\$21
Group 8+	\$23
Take 3 Deal (6PM)	\$60
Age Guide: 3+ years	

Special concession price for school groups. Please contact the Box Office.



MARIE
ASTLEY

PETRIES
MIGHTY HELFUL
MITRE 10

CDP Kids presents

GUESS HOW MUCH I LOVE YOU

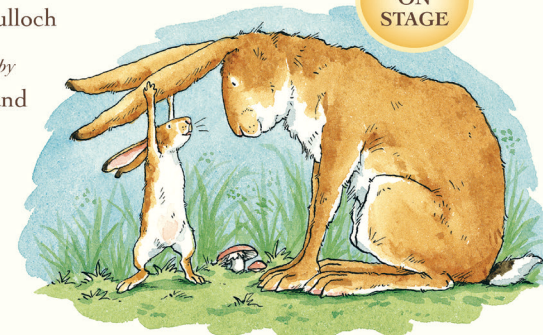
LIVE
ON
STAGE

A play by Richard Tulloch

Adapted from the books by
Sam McBratney and
Anita Jeram



cdpKids



Restart Investment to Sustain and Expand (RISE) Fund - an Australian Government Initiative.
Guess How Much I Love You™ and © Sam McBratney and Anita Jeram 2021. Licensed by Walker Books Ltd. Guess How Much I Love You is a registered trademark of Walker Books Ltd, London UK.

Guess How Much I Love You™ and © Sam McBratney and Anita Jeram 2021. Licensed by Walker Books Ltd. Guess How Much I Love You is a registered trademark of Walker Books Ltd, London UK.



DANCE

FRIDAY 1 APRIL, 7.30PM

SATURDAY 2 APRIL, 7.30PM

Dance Makers Collective

THE RIVOLI

A celebration of social life before social media, when to meet was to talk, laugh and move to music together.

From the early 1930s to the late 1960s, the Rivoli Dance Palace in Parramatta was Western Sydney's favourite dance hall. Demolished in 1973 to make way for an office development, now nothing remains of 'The Riv' except the stories of the people who danced there. This also rings true for the Dubbo region. Throughout this work, you'll hear the voices of people who danced at the Rivoli, as well as the voices of

locals who dance now, in this region. Dance has a way of bringing people and communities together in a way nothing else can. In reflecting and strengthening certain communities, it's also worth considering how these spaces can also exclude others. This work mirrors the interest that Dance Makers Collective (DMC) has always had in social dances. In some ways, these spaces for social dance reflect the aims of DMC itself – to gather, share ideas, and to support each other creatively, socially, and artistically. To dance together. *The Rivoli* features eight dancers and a stellar local band. We invite you



and your favourite dance partner to be swept into a nostalgic and immersive exploration of mid-century nightlife, desire and social connection. It is DMC's most ambitious work yet, *The Rivoli*, an ode to a bygone dance era.

"From the moment I stepped into the Town Hall I was propelled back in time...superbly crafted."

Vicki Van Hout, Form



Dance Makers Collective



Australian Government



Australia Council for the Arts



ARTS and LETTERS CENTRE



NSW GOVERNMENT



Subscribers	\$42
Adult	\$52
Concession	\$45
Youth	\$27
Group 8+	\$47
Age Guide: 6+ years	

Warning: Strobe lighting and fog

Venue: Convention Centre (Traverse seating) similar to a tennis court where all of the action is centre court on the floor!

MARIE ASTLEY



DUBBO DENTAL

Exhibition

The Pleasure of Your Company is Requested: A brief history of the Ball
March 14 – July 8
Museum Exhibition at the Western Plains Cultural Centre



Photo credit: Heidrun Lohr



FAMILY AND YOUTH

MONDAY 4 APRIL, 10AM, 1PM

Nicholas Clark Management

THE ALPHABET OF AWESOME SCIENCE

Wellington Civic Centre,
21-23 Swift Street, Wellington

Join professors Lexi Con and Noel Edge (the Word Nerd and the Science Freak) for a thrilling voyage through the alphabet – where great big chewy sesquipedalian words inspire mind-blowing scientific surprises.

Professor Lexi Con has curated a curious collection of her favourite words (one for every letter of the alphabet) with each word providing Professor Noel Edge with an inspirational jumping off point for 26 quirky scientific demonstrations – that squish and squirt, float and fly, erupt and explode.

Together, this dad-joke quipping,

prank-pulling pair of polished professors strut their stuff in a performance that's equal parts explosive, messy, spectacular, hilarious, fascinating and gross.

If things weren't exciting enough, every show is completely different, with audiences determining the order in which the letters are revealed and explored. Plus, did we mention, this is a race? The dynamic duo have just 52 minutes to complete their alphabetical, scientific countdown. That's just two minutes per experiment!

Will they make it in time...?

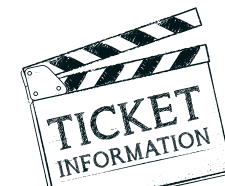


"Got a kid in your family who's a little inquisitive? Then for the love of all that is scientific, take them to see this show! You'll love it just as much as they do...If I could give it six stars I would".

The Advertiser



NCM



Subscribers	\$22
Adult	\$26
Concession	\$24
Youth	\$21
Group 8+	\$23
Take 3 deal (10AM & 1PM)	\$50
Age Guide: 5+ years	

Special concession price for school groups. Please contact the Box Office.



Photo credit: Studio Images: Scott Reynolds



FAMILY AND YOUTH
TUESDAY 17 MAY, 6PM
WEDNESDAY 18 MAY, 10.30AM, 1PM

Junkyard Beats and Critical Stages Touring

THE BOX SHOW

You'll never look at a cardboard box the same way again!

In the hands of Junkyard Beats, ordinary household items are transformed into extraordinary musical instruments and unwanted junk comes alive in exciting and surprising ways!

The Box Show excites the imagination of children and adults alike. We follow four characters during their daily activities in a world made of cardboard boxes and

junk. The contents of an abandoned kitchen and wheelie bins become the greatest drum set in the world; plastic bags are an amazing musical instrument and the human body becomes a unique sound machine.

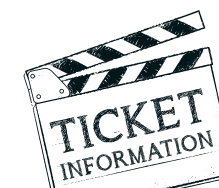
Tag along for a day in the life of a bunch of musical misfits as they reinvigorate the junk that the world has forgotten.

Learn about sustainability with this high energy, imaginative music-in-education performance combining

drumming, dance, theatre and comedy. With a language of gibberish and rhythm, this show is accessible to any age and nationality.

"The audience stand and cheer wanting more from the performers and the crowd is full of smiles as they exit the stage."

The Source



Subscribers	\$22
Adult	\$26
Concession	\$24
Youth	\$21
Group 8+	\$23
Take 3 deal (6PM)	\$60
Age Guide: 5+ years	

Special concession price for school groups. Please contact the Box Office.



Photo credit: Boaz Nothman



Photo credit: Boaz Nothman



CONCERT

SATURDAY 28 MAY, 7.30PM

Bruce Mathiske

BRUCE MATHISKE GUITAR ARTISTRY

Wellington Civic Centre,
21-23 Swift Street, Wellington

Incorporating influences from the likes of JS Bach, The Rolling Stones, original pieces and well-known classics, the notes explode from both hands leaving you to wonder if there is another Mathiske in the wings. This is a musical feast combining fiery fretwork, tender melodies and exciting rhythms from the only virtuoso guitar/didgeridoo player in the world, whose acclaimed and distinctive style has captivated audiences and led to standing ovations world-wide.

Guitar Artistry embraces multicultural

flavours and indigenous influences, which are woven together with rhythmic authenticity and a sound that is uniquely his and uniquely Australian. All blending beautifully with the colours and tones of percussionist Adam Manning who will join Mathiske and draw on the inspiration of his indigenous heritage.

Adam will also create a painting live on stage which will evolve over the evening and will be given away at the end of the concert. Manning's art focuses on combining both traditional and modern patterns.

Photo credit: The Street /Creswick Collective



"...displays technical brilliance and mastery of genres...Mathiske is the finest all round guitarist this country has produced."

Tony Hillier, The Australian



Subscribers	\$50
Adult	\$60
Concession	\$53
Youth	\$25
Group 8+	\$55
Age Guide: All ages	





FAMILY AND YOUTH

MONDAY 30 MAY, 6PM

TUESDAY 31 MAY 10AM, 1PM

Arena Theatre Company

ROBOT SONG

If you sing, you will find your song.

When eleven-year-old Juniper May receives a petition signed by her entire class stating that she is 'the most hated person in the school' her life is thrown into complete meltdown. Finally, after exhausting all other avenues her parents resort to the only thing they have left, a giant singing robot.

Based on a true story, *Robot Song* illustrates the profound, transformative nature of creativity that when combined with unconditional love, becomes an unstoppable force. For Juniper, creativity opens doors into places she never knew existed allowing her,

for the first time, to be defined on her own terms.

Robot Song is a deeply personal story. It shares an honest, intensely funny and often unconventional window into writer, director Jolyon James' experience parenting a child on the Autism Spectrum. The show poses and attempts to answer the question, how do we support, foster and celebrate difference in our children in the face of an increasingly rigid and homogenised world? *Robot Song* is a genuine family show. It is joyful and full of hope. It is for any child who has ever felt isolated or pushed to the margins and any parent desperate for tools to help.



"At times laugh-out-loud hilarious, *Robot Song* is also a poignant, compelling story, that covers topics young people would do well to be exposed to, without straying into being patronising or syrupy."

Fiona Parker, ABC



Subscribers	\$22
Adult	\$26
Concession	\$24
Youth	\$21
Group 8+	\$23
Take 3 deal (6PM)	\$60
Age Guide: 8+ years	

Special concession price for school groups. Please contact the Box Office.



MARIE
ASTLEY



NCM



Photo credit: Bill Conroy





COMEDY

FRIDAY 24 JUNE, 8PM

Melbourne International Comedy Festival

MELBOURNE INTERNATIONAL COMEDY FESTIVAL ROADSHOW

Strap yourself in Australia! The *Melbourne International Comedy Festival Roadshow* is hitting the highways to home-deliver the freshest and funniest from the 2022 Festival to neighbourhoods across the nation.

For 24 years, the Roadshow has presented an all killer, no filler line-up of Australian stars and talented newcomers to comedy fans far and wide.

Buckle up for a night of stand-up, sketch, satire, silliness and song in this rip-roaring road trip designed to satisfy all your post-pandemic comedy cravings!

Book now for that much-needed live comedy fix when we roll into a venue near you.



"Impeccable jokes, faultless antics and stomach-aching gags."

Perth Now



MELBOURNE
INTERNATIONAL
COMEDY
FESTIVAL
COMEDYFESTIVAL.COM.AU

CREATIVE VICTORIA



Subscribers	\$34
Adult	\$39
Concession	\$34
Youth	\$32
Group 8+	\$34
Age Guide: 15+ years	

Warning: Performances often contain coarse language, sexual references and material that can offend.

DAVID PAYNE
CONSTRUCTIONS

MARIE
ASTLEY





DRAMA

TUESDAY 5 JULY, 7.30PM

Bell Shakespeare

THE COMEDY OF ERRORS

By William Shakespeare

Director Janine Watson

Shipwrecked and separated 33 years earlier, two sets of long-lost twins miraculously find themselves in the same city on the same day. What could possibly go wrong?

The Comedy of Errors is a hilarious romp of swapped identities, misguided love, mistaken imprisonment and chaotic mishaps, leading to an unbelievably crazy day for bumbling twins.

At the heart of this tale of comedic misfortune is an old man searching for his lost children. He finds himself in a hostile land, in the fight of his life... to save his life. As far-fetched coincidences unfold, chaotic hilarity ensues and a man's life could be saved — if only everything would go to plan.

Directed by long-time Bell Shakespeare collaborator Janine Watson, this is a beautiful story about reunion, wrapped up in an evening of entertainment and laughter.

"Bell Shakespeare has mastered the art of presenting Shakespeare in a manner that is accessible to the modern-day audience, while still endearing those who love the tradition."

Australian Stage



Subscribers	\$46
Adult	\$56
Concession	\$48
Youth	\$26
Group 8+	\$51
Age Guide: 12+ years	

Special concession price for school groups. Please contact the Box Office.

MARIE
ASTLEY



BELL
SHAKESPEARE





DANCE

SATURDAY 9 JULY, 8PM

Sydney Dance Company

IMPERMANENCE

Returning to the stage for a national Australian tour after a sell-out Sydney world premiere season and an Adelaide Festival smash hit run, Rafael Bonachela's *Impermanence* is "arguably the single best piece created by and for an Australian dance company for many years" (*Adelaide Advertiser*).

A visceral and thrilling exploration of the juxtaposition of beauty and devastation, this full-length work features a new score full of emotional power from Grammy Award-winning composer Bryce Dessner.

Best known as a founder of American rock band *The National* and for his film scores for *The Revenant* and *The Two Popes*, Dessner was initially inspired by the tragedy of the Australian bush fires and the Notre-Dame fire in Paris. With an exquisite recording by the Australian String Quartet, and the full might of Sydney Dance Company's "awe inspiring" (*In Daily*) ensemble, this is an epic, driven performance that packs an emotional punch.

Photo credit: Pedro Greig



"A hypnotically beautiful work, stunningly performed"

Limelight



When COVID-19 struck in March 2020, *Impermanence* was only four days from its world premiere and opening night. As the impact of the pandemic became apparent, performances were cancelled and artists sent into lockdown. Life, and recovery, were on hold, but the collaboration persevered. With the added poignancy of a pandemic that has exposed so many vulnerabilities and changed us all at a profound level, *Impermanence* returns to the stage.

Experience the power of dance and music, laden with meaning, fleeting and vulnerable, and from devastation, find energy, urgency, radiance and hope.

SYDNEY
DANCE
COMPANY



Bryce Dessner's music composition *Impermanence* is commissioned by the Australian String Quartet and Sydney Dance Company. This commission has been assisted by the Australian Government through the Australia Council for the Arts, its arts funding and advisory body.



Subscribers	\$42
Adult	\$52
Concession	\$45
Youth	\$27
Group 8+	\$47
Take 3 deal	\$90
Age Guide: 12+ years	



MARIE
ASTLEY



Photo credit: Pedro Greig





OPERA

FRIDAY 5 AUGUST, 7.30PM

Opera Australia

THE BARBER OF SEVILLE

Beyond haircuts and beard trims, this canny barber is the city's matchmaking maestro!

Almaviva is wealthy, stealthy and head over heels. Smitten Rosina is witty and pretty with razor-sharp smarts. She's also inconveniently betrothed. They need a plan. Time to call on: Fi-ga-ro! Figaro! Figaro!

The stage is set for comic chaos. Our enterprising barber Figaro has wits and tricks as sharp as his scissors. It takes all of his clever disguises, subterfuge and scheming to wrangle a romantic encounter for the would-be lovers.

The Barber of Seville fizzles and pops with lyrical acrobatics and irrepressibly funny characters. Rossini's most famous 'opera buffa' is a musical masterpiece with a storyline that would be equally at home in a Hollywood rom-com. Opera Australia's finest voices and a live orchestra deliver a score that is instantly familiar from renditions in movies, cartoons and commercials. Here, the frothy humour is intoxicating and the chorus revels in every uproarious escapade. Includes the youth chorus from Macquarie Conservatorium.

Photo credit: Georges Antoni



Delight in a riotous romp along the road to true love! This is opera at its light-hearted, effervescent best.

NATIONAL TOUR PARTNERS

LEADING
PARTNER



GOVERNMENT
PARTNERS



OPERA
CONFERENCE



SUPPORTING
PARTNER



PROUDLY
SUPPORTED BY



PATRON-IN-CHIEF
DR HARUHISA HANDA



Subscribers	\$52
Adult	\$62
Concession	\$55
Youth	\$27
Group 8+	\$57
Age Guide: 15+ years	

Warning: Strobe lighting, use of herbal cigarettes, mature themes.
Sung in Italian with English surtitles.



Photo credit: Michelle Sverdlhoff



FAMILY AND YOUTH

TUESDAY 9 AUGUST, 10.30AM AND 12PM

WEDNESDAY 10 AUGUST, 10.30AM AND 6PM

Australian Chamber Orchestra

THERE'S A SEA IN MY BEDROOM

Based on the book by Margaret Wild, illustrated by Jane Tanner
Adapted for the stage by Tim McGarry
with original music by Paul Stanhope

David is frightened of the sea. He does not like it at all, not one bit. But one day he finds a conch shell at the beach and takes it home - and he hears the sea trapped inside. 'Come out, sea, come out,' he says softly. 'I won't hurt you.'

Based on the beloved children's book by award-winning author Margaret Wild, *There's a Sea in*

My Bedroom is an immersive and theatrical introduction to live classical music, capturing the magic of a child's fantasy world.

The exquisite performance weaves together captivating storytelling with a specially commissioned score from Australian composer Paul Stanhope, performed live by a string quintet of ACO musicians.



Illustration © Julie Vivas

Dubbo Regional Theatre and the Australian Chamber Orchestra are proud to present this beautifully reimagined story that promises to bring moments of joy, sadness, fear, magic and laughter.

"It was quite delightful and entrancing. The soundscape and the lighting really immersed the children in an unexpected magical world. I didn't know whether to watch the performance or the children's faces as they responded to it!"

Audience member



Australian Chamber Orchestra



Australia Council
for the Arts



Create NSW
Arts, Screen & Culture



Subscribers	\$22
Adult	\$26
Concession	\$24
Youth	\$21
Group 8+	\$23
Take 3 deal (6PM)	\$60
Age Guide: 2-8 years	

Special concession price for school groups. Please contact the Box Office.



MARIE
ASTLEY



Photo credit: Clare Hawley



COMEDY

SATURDAY 13 AUGUST, 8PM

A-List Entertainment

MULTICULTURAL COMEDY GALA

A night celebrating cultural diversity with a superb line-up of some of Australia's best stand-up comedians.

Join a star-studded line-up of Australia's best and emerging comedic talent as they touch on cultural identity in a concoction of comedy that pokes fun at what makes us all different but so much the same.

The *Multicultural Comedy Gala* is a hilarious celebration of diversity and multicultural Australian identity and exemplifying how it is one of our greatest cultural assets.

This is a night of side-splitting, thigh-slapping stand-up comedy that illuminates your soul. The *Multicultural Comedy Gala* will leave you captivated, connected and smiling at our proud inclusive heritage.



So, do your soul a favour and treat it to a night of laughter that you will never forget.

You probably need it!



Subscribers	\$54.90
Adult	\$59.90
Concession	\$54.90
Youth	\$54.90
Group 8+	\$54.90
Age Guide: 15+ years	





DRAMA

WEDNESDAY 7 SEPTEMBER, 7.30PM

shake & stir theatre co

JANE EYRE

By Charlotte Bronte

Adapted by shake & stir theatre co

Brontë's gothic tale of a spirited orphan in search of love, family and a sense of belonging, blazes the country in 2022.

Witness one of the most iconic pieces of English literature retold in a faithful yet fiercely original new stage adaptation from the nationally-renowned shake & stir theatre co (*Animal Farm*, *Dracula*).

Following a childhood spent suffering at the hands of her cruel Aunt, Jane finds employment at Thornfield Hall – the impressive yet mysterious home of Edward Rochester. As Jane and Rochester become inexplicably drawn to each other, the dark secrets locked within the walls of Thornfield start to unravel forcing Jane on a heart-wrenching journey toward truth and freedom.

This stunning new production, featuring

original music, written by multi ARIA Award winner Sarah McLeod, will set a fire blazing in your soul.



Photo by Dylan Evans, Production Photography: Photo by David Fell

"shake & stir's JANE EYRE is a blazing success. It will make you think, it will make you feel and it will give you hope."

Broadway World

shake&stir
theatreco

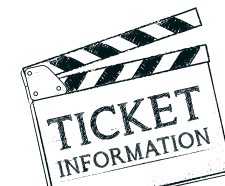
Qpac
QUEENSLAND
PERFORMING
ARTS CENTRE

Queensland
Government

Australian Government

Australia
Council
for the Arts

This project has been assisted by the Australian Government through the Australia Council for the Arts, its arts funding and advisory body.



Subscribers	\$46
Adult	\$56
Concession	\$48
Youth	\$26
Group 8+	\$51
Age Guide: 12+ years	

Warning: Contains adult themes, simulated violence and supernatural elements and will feature strobe, loud music and fire/smoke/haze effects.

Special concession price for school groups. Please contact the Box Office.





DANCE
TUESDAY 13 SEPTEMBER, 7.30PM
WEDNESDAY 14 SEPTEMBER, 7.30PM

Russian Ballet Ltd, Moscow

SWAN LAKE

The Imperial Russian Ballet Company return to Australia with *Swan Lake* - the most loved classical ballet of them all.

This masterpiece ballet is presented in two acts and follows the original storyline. Subtle revisions and variations have been introduced by Gediminas Taranda, Artistic Director of the Imperial Russian Ballet Company.

Swan Lake crosses the world of magic and mystical creatures with that of the real world. It is a story where the virtues of love and forgiveness in the end conquer evil and betrayal.

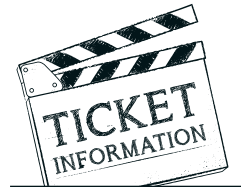
The Imperial Russian Ballet Company was formed in 1994, headed by the Bolshoi Theatre soloist, Gediminas Taranda. The Imperial Russian Ballet Company comprises 40 dancers from the major ballet schools of Russia.



Photo credit: Jared Taylor Photography

"In a night that overflows with all things ballet, you can't help be swept up by the sheer panache of the Imperial Russian Ballet dancers"

West Australian



Subscribers	\$95
Adult	\$105
Concession	\$95
Youth	\$65
Group 8+	\$95
Age Guide: All ages	



FAMILY AND YOUTH

TUESDAY 4 OCTOBER, 6.30PM

The Listies and Critical Stages Touring

ROFL

(ROLLING ON THE FLOOR LAUGHING)

Written and performed by Matthew Kelly and Richard Higgins as The Listies!

"Does it have a burpershop quartet?" Yes, yes it does.

"Does the show feature the world's most annoying song?" Totes!

"Is there a mini panto fairy tale called 'Jack and the Beans-Talk' about a boy who eats magic beans and farts himself into space?" YES I MEAN WHAT SHOW DOESN'T HAVE THAT?

"Will I roll on the floor laughing so hard a little bit of wee comes out?" Yes, yes you will...you should probably bring a towel.

Gratuitous, ridiculous, hilarious,

joyous and possibly hazardous, Rich and Matt are The Listies, Australia's maestros of kidult comedy, a multi-award winning duo who win over everyone who comes to see them with their insane, interactive, illogical and irreverent escapades.

ROFL (Rolling on the Floor Laughing) is the freshest double act sketch comedy in kid's entertainment. It's all of the most popular bits of The Listies' sell-out shows jam-packed with a brand new set of hilarious comedy routines that will have the whole family in stitches.



"The only downside of seeing The Listies is that kids may be disappointed the next time they go to the theatre because it isn't always this awesomely excellent."

Sometimes Melbourne



Critical Stages
Touring



Australia
Council
for the Arts

CREATIVE VICTORIA



The Russell Mills Foundation
Experiences
Humanity



Subscribers	\$22
Adult	\$26
Concession	\$24
Youth	\$21
Group 8+	\$23
Age Guide: 4+ years	

Warning: Some sudden loud noises.





FAMILY AND YOUTH

SATURDAY 8 OCTOBER, 4PM

Erth Visual and Physical Inc.

ERTH'S PREHISTORIC WORLD

Written and Directed by Erth Visual and Physical Inc.

Two worlds. Twice the thrill.

Bringing ancient creatures from land and sea together in one show, *Erth's Prehistoric World* is the perfect combination of theatrical magic and charm. It takes the audience to the bottom of the ocean to discover ancient bio-luminescent creatures and marine reptiles, and then back

to dry land to witness some of the most amazing dinosaurs to have ever walked this Earth.

Dinosaurs are a gateway to learning, inspiring young minds to consider an array of subjects from science to literature, geology to bioengineering, and natural history to mathematics. Dinosaurs have

become a curious link between child and parent, grandparent, guardian and educator. The learning opportunities are immense.

Experience the creatures of your imagination coming to life on stage in this enthralling new show!

"...clever, beautifully constructed and hugely entertaining"

The Daily Telegraph

erth
Visual & Physical Inc.

ARTS
ON TOUR

Australian Government

Australia
Council
for the Arts

NSW
GOVERNMENT

This project has been assisted by the Australian Government through the Australia Council for the Arts, its arts funding and advisory body.



Subscribers	\$22
Adult	\$26
Concession	\$24
Youth	\$21
Group 8+	\$23
Age Guide: 5+ years	

Warning: Contains fog/ smoke effects, loud noise and dinosaurs.

**DAVID PAYNE
CONSTRUCTIONS**



Photo credit: Isabella Moore



FAMILY AND YOUTH

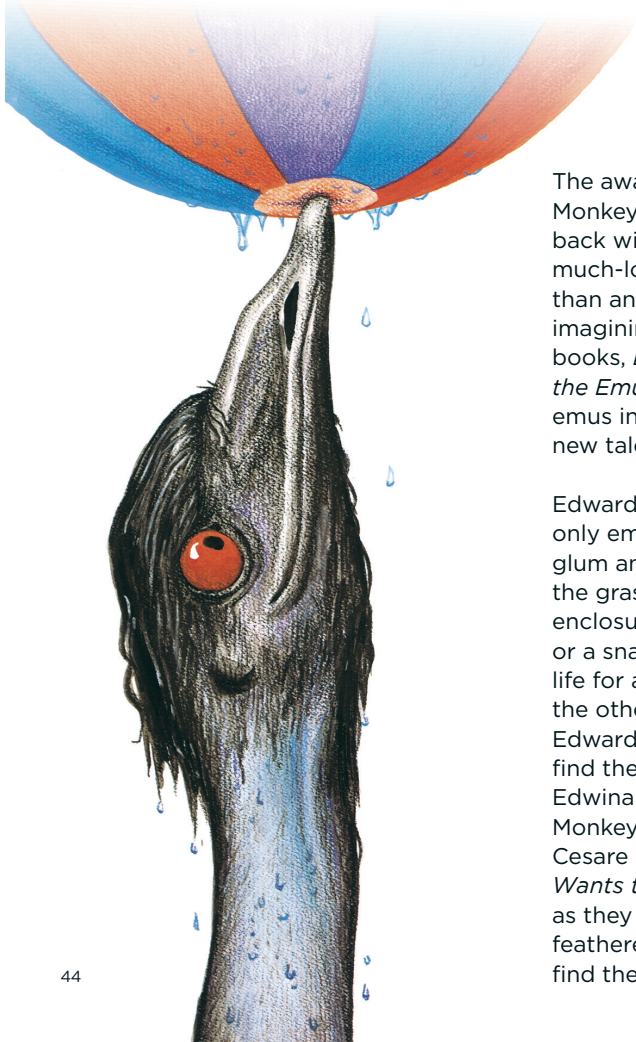
MONDAY 31 OCTOBER, 6PM

TUESDAY 1 NOVEMBER, 10AM AND 12.30PM

Monkey Baa Theatre Company

EDWARD THE EMU

Based on the books by Sheena Knowles and Rod Clement
Written for the stage and directed by Eva Di Cesare



The award-winning creative team from Monkey Baa Theatre Company are back with a brand-new take on another much-loved tale, *Edward the Emu*. More than an adaptation, this is a unique imagining of two beloved picture books, *Edward the Emu* and *Edwina the Emu*, combining the plights of both emus in one heartfelt, clever and funny new tale.

Edward is bored with his lot. Being the only emu at the zoo has left him feeling glum and under the impression that the grass is greener in everyone else's enclosure. Maybe being a seal, or a lion, or a snake might be a better option in life for a lonely bird? Convinced that the other creatures are more popular, Edward breaks ranks and goes to find the fun and along the way, finds Edwina! Written for the stage by Monkey Baa's Artistic Director Eva Di Cesare (*Diary of a Wombat*, *Josephine Wants to Dance*) we follow the emus as they hilariously navigate their own feathered existential crises, seeking to find their place in the world.

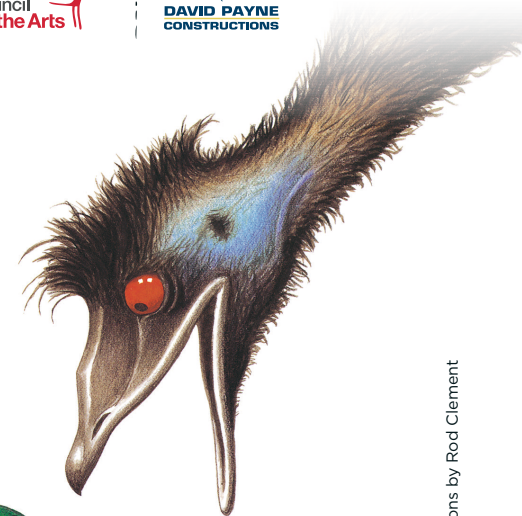
"I absolutely love what you have done ...
clever, quirky, and very original"
Sheena Knowles,
author *Edward the Emu* & *Edwina the Emu*

monkey
baa theatre company



Subscribers	\$22
Adult	\$26
Concession	\$24
Youth	\$21
Group 8+	\$23
Take 3 deal (6PM)	\$60
Age Guide: 4 - 10 years	

Special concession price for school groups. Please contact the Box Office.





COMEDY

THURSDAY 3 NOVEMBER, 8PM

Sydney Comedy Festival

SYDNEY COMEDY FESTIVAL SHOWCASE

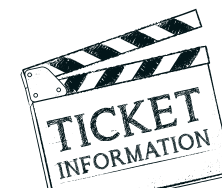
The Festival's funniest in one hilarious night!

The *Sydney Comedy Festival Showcase* tour will be tearing up the freeways of Australia to bring the best of the 2022 Festival to Dubbo!

Expertly curated and lovingly presented, the Showcase will feature some of the Festival's hottest acts live on stage for an incredible two

hours of hard-hitting laughter. Boasting a line-up of veteran favourites and some of the freshest emerging talents, this jam-packed night of pure entertainment will leave you sore from belly laughs!

So call your pals and grab your tickets to the funniest night of entertainment you will see all year – don't miss out on a huge night of laughs!



Subscribers	\$34
Adult	\$39
Concession	\$34
Youth	\$32
Group 8+	\$34
Age Guide: 15+ years	

Warning: Performances often contain coarse language, sexual references and material that can offend.





CABARET

SATURDAY 5 NOVEMBER, 7.30PM

Finucane & Smith

THE TRAVELLING DANCE HALL

Wellington Civic Centre
21-23 Swift Street, Wellington

Finucane & Smith dance into the region with the knees-up of the year!

Grab your friends, throw on your glad rags! Finucane & Smith's smash-hit sell-out shindig is coming to town. Bursting at the seams with global talent, a playlist to die for and suitcases bulging with heels, sequins, feathers and songbirds!

From the unstoppable creators of the world's most awarded provocative variety show, having played to 600,000 fans in 18 countries, won 13 awards, and

barnstormed the longest tour of Variety since the Gold Rush, Finucane & Smith know how to mix a party!

Global talent, irresistible music, festoons and fan-dancing, torch songs and hot moves, and local guest stars lighting up the stage! Dance Hall celebrates the beauty of community under twinkling lights, velvet drapes, satin table seating, ABBA and disco fever!

Dust off your sequins, silk ties and fishnets and get ready to get down! Dance Hall is coming!

"I cannot express how exhilarating and uplifting this show is" ★★★★★

Planet Arts



Australian Government
RISE Fund



Australian Government

Australia Council
for the Arts

SOFITEL
HOTELS & RESORTS



REGIONAL
ARTS
VICTORIA



Subscribers	\$42
Adult	\$52
Concession	\$45
Youth	\$27
Group 8+	\$47
Age Guide: 16+ years	

Warning: Performance
nudity, haze, dancing to
ABBA!



Photo credit: Jodie Hutchinson/TearitUp Design

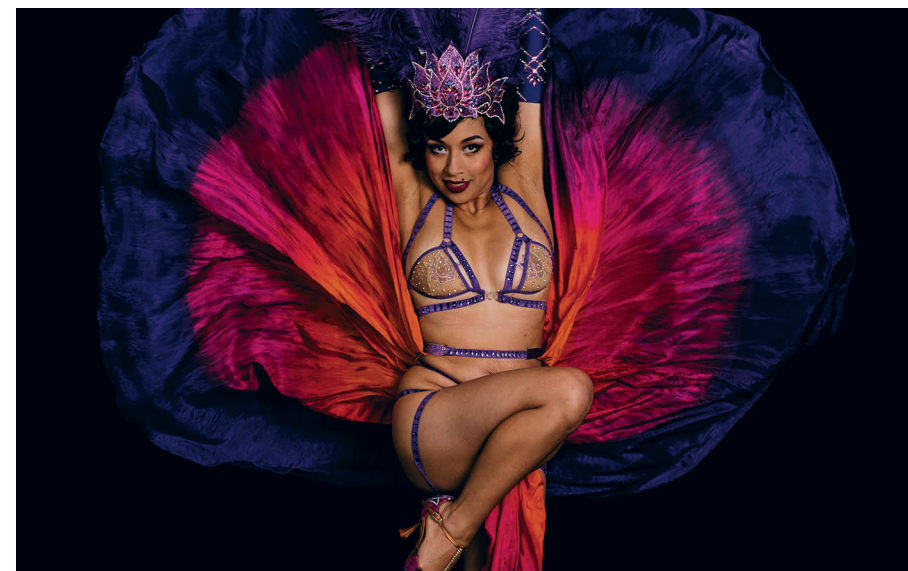


Photo credit: Damien Geary



COMEDY

SATURDAY 12 NOVEMBER, 8PM

SUNDAY 13 NOVEMBER, 8PM

A-List Entertainment

KITTY FLANAGAN LIVE!

Kitty Flanagan Live!

You've seen her on *Fisk*, *Utopia* and *Have You Been Paying Attention?* She wrote a best-selling book called *488 Rules for Life*.

But now, after nearly two years at home drinking hand sanitiser and tonic, Kitty Flanagan is finally back on stage doing what (she thinks) she does best, solving the world's problems. All of them. Get involved!



Photo credit: Rebecca Banas

"Kitty Flanagan is stupidly funny and incredibly charming to boot."

GLAM Adelaide



Subscribers	\$54.90
Adult	\$59.90
Concession	\$54.90
Youth	\$54.90
Group 8+	\$54.90



SUBSCRIBER INFORMATION

How to become a Season Subscriber

You can become a Subscriber by booking and paying for at least three (3) shows from the Season booklet. You are eligible for the Subscriber price, and the cost of your Subscription is determined by how many shows you select, with three (3) being the minimum. Subscribers have priority booking from Sunday 28 November 2021 until close of business on Friday 28 January 2022 from which point all shows will be on general sale. The one exception is At the Crossroads - Dale Burridge which will be on general sale from 28 November 2021.

Subscribe with friends

If you wish to be seated with friends, please ensure all subscription forms are returned to the Box Office at the same time. Every effort is made to seat friends together subject to availability.

Expanding your Subscription

As a Subscriber you can expand your subscription throughout the year by purchasing tickets to any additional shows in the Season booklet at the Subscriber price (for your use as a Subscriber only). Please note that extra shows from other presenters may be added throughout the year. These are known as Hirers or Promoters. Subscribers are also eligible for the Subscriber discount price when listed on these performances. Simply enter the code on your Subscriber card to access discounts online, alternatively present your card at the Box Office, or phone us.

Exchanges

When life gets busy and plans change, the benefit of being a Subscriber is that you may exchange your ticket(s) from one of the Season shows you have selected, to a different Season show in the 2022 booklet. This is subject to availability and providing THREE business days' notice is given.

Hospitality Partners

Receive a 10% discount on your meal at The Pastoral Hotel Restaurant and The Commercial Hotel on presentation of your 2022 Subscriber card. Receive a 10% discount on your room rate at the Bluegum Dubbo Motel and Endeavour Court Motel. Don't forget to mention your Subscriber status at the time of booking to qualify. (Subject to availability).

BOOKING YOUR SUBSCRIPTION PACKAGE

Online: Visit drtcc.com.au and click on Get Involved | Become a Subscriber tab

In Person: 155 Darling Street, Dubbo. Box Office hours are 9.30am to 4.30pm Monday to Friday

Email: info@drtcc.com.au

Phone: Call 02 6801 4378 during Box Office hours. Please have your credit card details handy. If it is a busy time for Box Office you may need to leave a message and we'll return your call as soon as possible. A \$2.95 postage and handling fee applies if you would like your tickets sent to you in the mail.

Mail: Enclose your booking form/s with a cheque made payable to Dubbo Regional Council and post to Subscription Booking Form, DRTCC, PO Box 81, Dubbo NSW 2830

GENERAL INFORMATION

Health and Safety

DRTCC's policies and procedures are regularly reviewed in line with the latest NSW Government advice. For up-to-date information about COVIDsafe practices at our venues, please visit our website.

If you are experiencing symptoms or are required to self-isolate due to COVID-19, please contact the Box Office prior to the performance on 02 6801 4378, or if outside of opening hours, by emailing info@drtcc.com.au

Audience Capacity

Capacity limits will be in line with the NSW Government restrictions at the time of each performance. Unless otherwise advised, there will be no social distancing, please note you may be seated alongside other ticket holders.

What you can do



Stay home if you are unwell



Maintain social distancing



Wash your hands regularly



Check in with the Service NSW app



Masks are welcome

How to book:

Online: drtcc.com.au

If booking online, please note you do not need to physically print out your ticket if you have chosen to receive an eTicket. You can show your ticket (or screenshot) on your smart phone and present at the door or alternatively opt for Box Office collection.

The Box Office is open 9.30am - 4.30pm Monday - Friday and one hour prior to each performance. Phone: 02 6801 4378 | Email info@drtcc.com.au. Please note if the Box Office is busy when you call, you may need to leave a message. Staff will return your call as soon as possible.

Upon receipt of your tickets, please check to ensure the dates and times are correct and refer to the Terms and Conditions.

Concessions and Student Tickets

Discounted tickets are available for Pension or Health Care card holders (not Senior Card holders) and students aged 16 and older, including full time tertiary students. Concessions must be valid at the time of booking and refunds are not payable if you become eligible for a concession after you have booked. Students aged 16 and older, including full time tertiary students, need to provide proof of eligibility when purchasing tickets in the Youth price category. Youth aged 16 and under must be accompanied by an adult when attending the Theatre.

Take 3 Deal

The *Take 3 Deal* is available for those who book three (3) tickets to the same performance from the Season booklet in the one transaction. Additional single tickets can be added to the deal and will be charged at the applicable ticket price. *Take 3 Deal* performances are identified on the relevant show pages.

Group Bookings

Group bookings are available for many productions when you book a minimum of 8-10 tickets at the same time for the same show. For information about group discounts, visit the show page or for larger group bookings, contact the Box Office 02 6801 4378.

Companion Card

Companion Card holders are eligible for one complimentary ticket for their companion when purchasing tickets for themselves. This is only available by booking with the Box Office directly via phone or in person. The Companion Card holder is required to be present at the time of collection. The Companion Card must be shown to the Box Office staff before the carer ticket can be issued.

Accessible Seating

Selected seats in the theatre are available for patrons who use wheelchairs or have other mobility concerns. Advance bookings are recommended as these seating spots are limited. To book accessible seating, please contact the Box Office as these seats cannot be booked online and are released for general sale one week prior to the show or earlier for sold-out performances.

No Refunds or Exchanges

We are unable to refund or exchange tickets after purchase except if the event is cancelled, rescheduled or significantly relocated. However, if you are experiencing symptoms or are required to self-isolate due to COVID-19, please refer to our website for our COVID-19 refund and exchange conditions.

Gift Certificates

DRTCC Gift Certificates make an ideal gift for Christmas or any special occasion. They are available in any customised amount of your choosing (minimum purchase \$25) and can be purchased online or at the Box Office. Gift Certificates are valid for three (3) years from the date of purchase and can be redeemed against any performance at the DRTCC or Wellington Civic Centre.

Friends and Buddies Club

Fancy a bit of theatre but don't fancy coming on your own? The FAB club is a chance to meet new theatre loving friends. When booking, just let our Box Office staff know you would like to buddy up and one of our FAB staff or volunteers will welcome you on arrival, link you up with other soloists and blend you in with the crowd.

Plan your Visit Email

Prior to each show we send out an email to all ticket-holders which includes important information specific to the performance you are seeing, and your visit to the theatre. To ensure you have the best DRTCC experience possible, make sure your email address is up-to-date and registered with us so you don't miss out.

Access and Accessibility

DRTCC is dedicated to making the theatre accessible to all. Please contact us to discuss your special needs so we can ensure your comfort and enjoyment.

- Wheelchair accessible seating is available at the front and the rear of the theatre. There are limited wheelchair seating spots available, so advance bookings are recommended by contacting the Box Office.
- The Theatre is fitted with a hearing aid induction loop compatible with T-Switch

hearing aids. Please note it is not available in rows A, B or C due to the close proximity to the stage.

- Level access to the main foyer is via the main entrance on Darling Street. To reach the mezzanine level we have a lift in the main foyer ground level, and also have a level access point to the auditorium through Door 1 which allows patrons to walk directly into the theatre.
- Accessible toilets are located in the Foyer - ground level.
- Guide/support dogs are welcome at Dubbo Regional Theatre. If you require information on bringing your support dog into the venue, please contact the Box Office.
- Productions offering AUSLAN interpretation will be identified in the booklet and on the website. Auslan Interpretation is suitable for people who are d/Deaf and communicate using Australian Sign Language (Auslan). To book seats near the interpreter, please contact the Box Office.

Location and Parking

We are located at 155 Darling Street, Dubbo. Car parks are available, adjacent to the south and north of the facility with a total of 100 car spaces including five accessible car spaces. Both car parks are well lit at night. In addition, there is ample parking along Darling, Church and Talbragar Streets and Carrington Avenue. Time restrictions may apply, please refer to parking signs. Please ensure your vehicle is locked and do not leave valuables in your vehicle.

Refreshments

Food and drink are not permitted in the Theatre auditorium (except for bottled water), however our theatre bar is open for an hour before most shows. A range of light snacks, alcoholic and non-alcoholic drinks are available for purchase and we encourage you to arrive in plenty of time so you can enjoy some refreshments before the show. You can also pre-order your drinks from the bar for collection at interval.

Latecomers

Please be aware that latecomers can only be admitted into the theatre at a suitable break in the performance. Please make sure you are seated in plenty of time.

Mobile Phones

We encourage you to download the Covid-Safe app, and to have the app running during your visit with us, however all mobile phones and electronic devices are to be turned off prior to the performance commencing.

Cameras and any form of electronic recording equipment are not permitted in the Theatre Auditorium. Generally photos of performances are not permitted. On the occasion that photos are permitted by the producer, an announcement will be made prior to the show and signage displayed at each door - feel free to share your images on social media! #drtcc

Connect with us

In addition to the 2022 Season booklet, a variety of shows will be added throughout the year. You can stay up-to-date with the latest performance listings by visiting our website, signing up to our free e-Newsletter, following us on Facebook or picking up a flyer.

DRTCC staff

Manager Linda Christof

Technical Co-ordinator David Brown

Functions Co-ordinator Scott McTiernan

Event Booking Co-ordinator Tiffany Rowland

Ticketing Officer Cheryl Burke

Functions Officers Dimity Middleton and Colin Rouse

Venue Technician Nathan Exelby

Functions Assistant Faye Warwick

Casual Ticket Sellers Kathy Hawkins and Amy Schink

Plus numerous invaluable casual technicians and bar staff form part of our team.

We would like to acknowledge the wonderful work of our volunteers who give freely of their time because of their passion for live performance. Many of them have been with us since we first opened the doors twelve years ago!

Dubbo Regional Theatre and Convention Centre and Wellington Civic Centre are facilities of Dubbo Regional Council.



YOUR EVENT - OUR SPACE

WEDDINGS / SHOWS / EVENTS / CONFERENCES / EXHIBITIONS

The region's award winning Conference and Performing Arts Centre is exquisitely appointed and conveniently located in the heart of Dubbo.

Key features include:

- 500-seat tiered Theatre
- 750-seat Convention Centre
- Oxley Function Room
- Commercial kitchen
- Modern bar facilities
- Accessibility
- Ample parking
- Box Office
- Professional on-site team

Dubbo Regional Theatre and Convention Centre
drtcc.com.au | 02 6801 4378 | 155 Darling Street, Dubbo



SOCIAL CALENDAR

January	29	At the Crossroads - Dale Burridge	
February	15	The Wharf Review: Can of Worms	
March	8-9	Guess How Much I Love You	
April	1-2	The Rivoli	
	4	The Alphabet of Awesome Science	
May	17-18	The Box Show	
	28	Bruce Mathiske Guitar Artistry	
	30-31	Robot Song	
June	24	Melbourne International Comedy Festival Roadshow	
July	5	The Comedy of Errors	
	9	Impermanence	
August	5	The Barber of Seville	
	9-10	There's a Sea in My Bedroom	
	13	Multicultural Comedy Gala	
September	7	Jane Eyre	
	13-14	Swan Lake	
October	4	ROFL - The Listies	
	8	Erth's Prehistoric World	
	31	Edward the Emu	
November	1	Edward the Emu	
	3	Sydney Comedy Festival Showcase	
	5	The Travelling Dance Hall	
	12-13	Kitty Flanagan Live!	

CONCERTS
COMEDY
DANCE
DRAMA
FAMILY AND YOUTH
MUSICALS/CABARET
OPERA

Show details and buy tickets
DRTCC.COM.AU
 Keep up to date - join our mailing list

DRTCC 155 DARLING ST, DUBBO
 PHONE: (02) 6801 4378



Details are correct at the time of production. Management reserves the right to add, substitute, vary the program and schedule should the need arise.