

# Dubbo Regional Theatre and Convention Centre Macquarie Auditorium

(750 seat Flat floor Auditorium with Stage)

## Technical Specifications

Updated: June 2023

**Technical & Production Coordinator: David Brown**

Phone number: 02 6801 4372  
Fax number: 02 6801 4399  
Mobile: 0418 270 500  
Email: [david.brown@dubbo.nsw.gov.au](mailto:david.brown@dubbo.nsw.gov.au)

**Senior Venue Technician:**

**Blake Condon**

Phone number: 02 6801 4376  
Phone number: 0459 9882 3904  
Email address: [blake.condon@dubbo.nsw.gov.au](mailto:blake.condon@dubbo.nsw.gov.au)

**Venue Technician:**

**Kevin Comber**

Phone number: 02 6801 4394  
Phone number: 0429 889 546  
Email address: [kevin.comber@dubbo.nsw.gov.au](mailto:kevin.comber@dubbo.nsw.gov.au)

**Venue:**

Phone number: 02 6801 4378 (Box Office)  
Website: [www.drctcc.com.au](http://www.drctcc.com.au)  
Venue address: 155 Darling St, Dubbo NSW 2830  
Postal address: PO Box 81, Dubbo, NSW 2830



**Macquarie Auditorium:**

21.5m wide x 27.8m long (to front edge of raised stage) = 600m<sup>2</sup>

<b>Seating capacity</b>	750
<b>Seating capacity at round tables</b>	540
<b>Seating capacity at rectangular tables</b>	550

**There is a retracting wall that divides the floor area of the Auditorium into halves.**

**Half Auditorium**

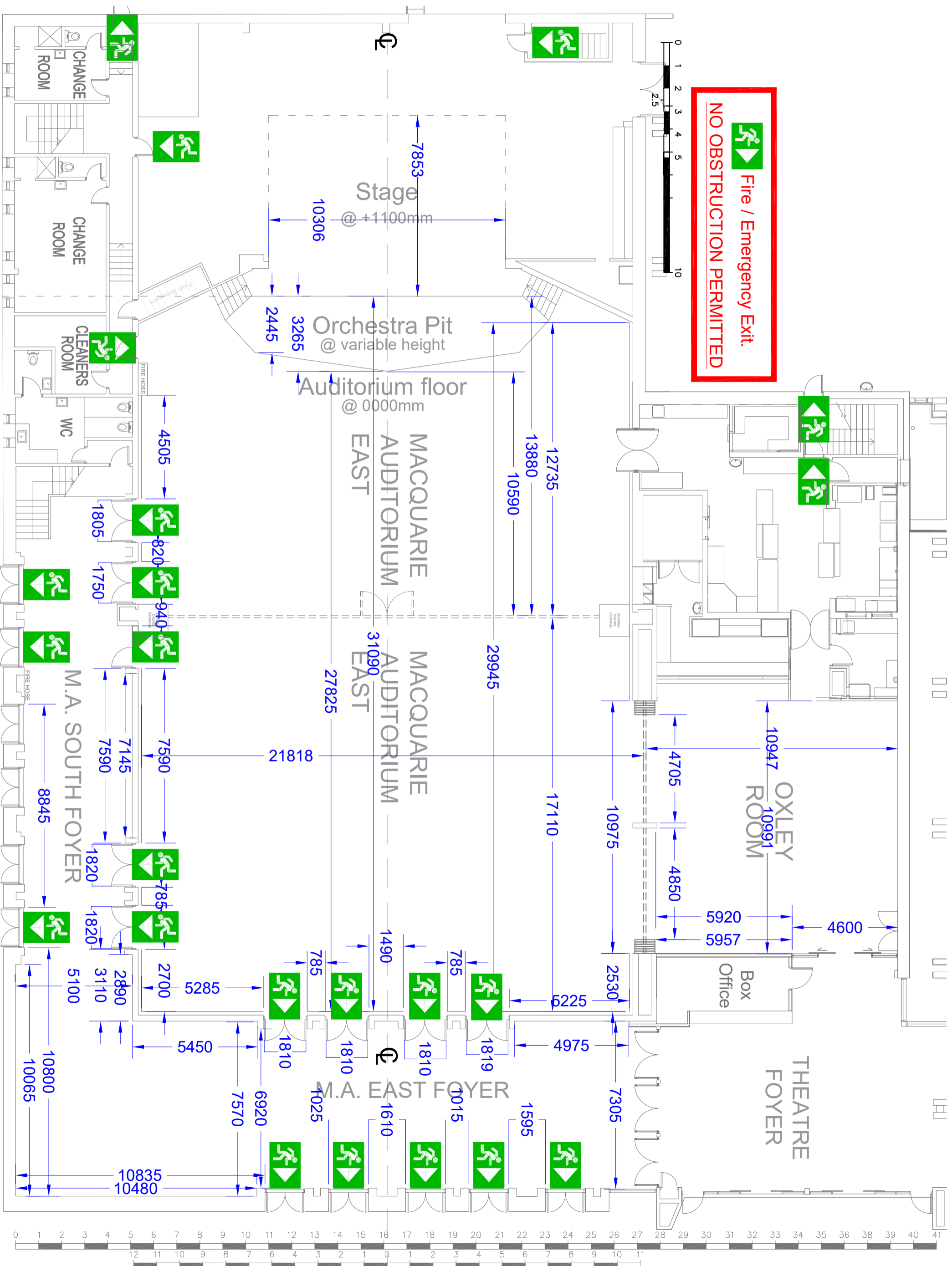
<b>Seating capacity 1 aisle</b>	320
<b>Seating capacity 2 aisles</b>	280
<b>Seating capacity at tables</b>	180

**Oxley Room area** 10.5m x 12m = 125m<sup>2</sup>

**Tables**

- 66 x grey tables (1980mm x 760mm). Height from floor: 730 mm.
- 55 x Round tables (1800mm diameter)
- 30 x (tan) laminated timber tables (1800 x 750)
- 30 x (white) laminated timber tables (1800 x 750) on trollies
- 10 x Blue tables (1800 x 740)
- 5 x Brown tables (2080 x 740)

 Fire / Emergency Exit.  
**NO OBSTRUCTION PERMITTED**



**Orchestra Lift / Pit:**

**Orchestra Pit ('Raised Stage')**

Electric screw-jack operated orchestra lift

**Stage level at** 1.1 metres above auditorium.

**Lift can be set at any height** YES

**Stage Dimensions:**

**Proscenium**

Width 10.4m

Height 4.2m

**Standard Performance Area:** 7.8 metres x 10.2 metres

**Distance From :**

Stage Edge to DS edge of Orchestra Lift/Pit	at centre 3.3 metres
Stage Edge to last upstage fly line	7.8 metres
Stage Edge to rear wall	11.8 metres
Centre Line to OP wall (or obstruction)	10.6 metres DS, 7.9 metres US
Centre Line to PS wall (or obstruction)	10 metres DS, 6.1 metres US
Centre Line to Standard Masking line	5.1 metres

**Lighting:**

**Lighting desk** LSC Mantra Lite 24  
**Control channels** 512  
**Signal output** DMX 512

**House Lights:**

**Control** Crestron system.  
**Control positions** Prompt corner, Mid-hall, Rear of hall  
**Fade time adjustable** NO

**Stage Luminaries:**

**Profiles**

Make	Model	Angle	Detail / Accessories	Watt	Total
ETC	Source 4	36°		650	<b>4</b>

**LED Fresnel/PC**

Make	Model	Angle	Detail / Accessories	Watt	Total
Elation	Fuze Par Z175	8° - 35°	Barn Doors	175	<b>9</b>
Make	Model	Angle	Detail / Accessories	Watt	Total
Elation	Fuze Wash Z120	7° - 55°	Moving Wash	120	<b>4</b>

**Power**

3 Phase Outlets

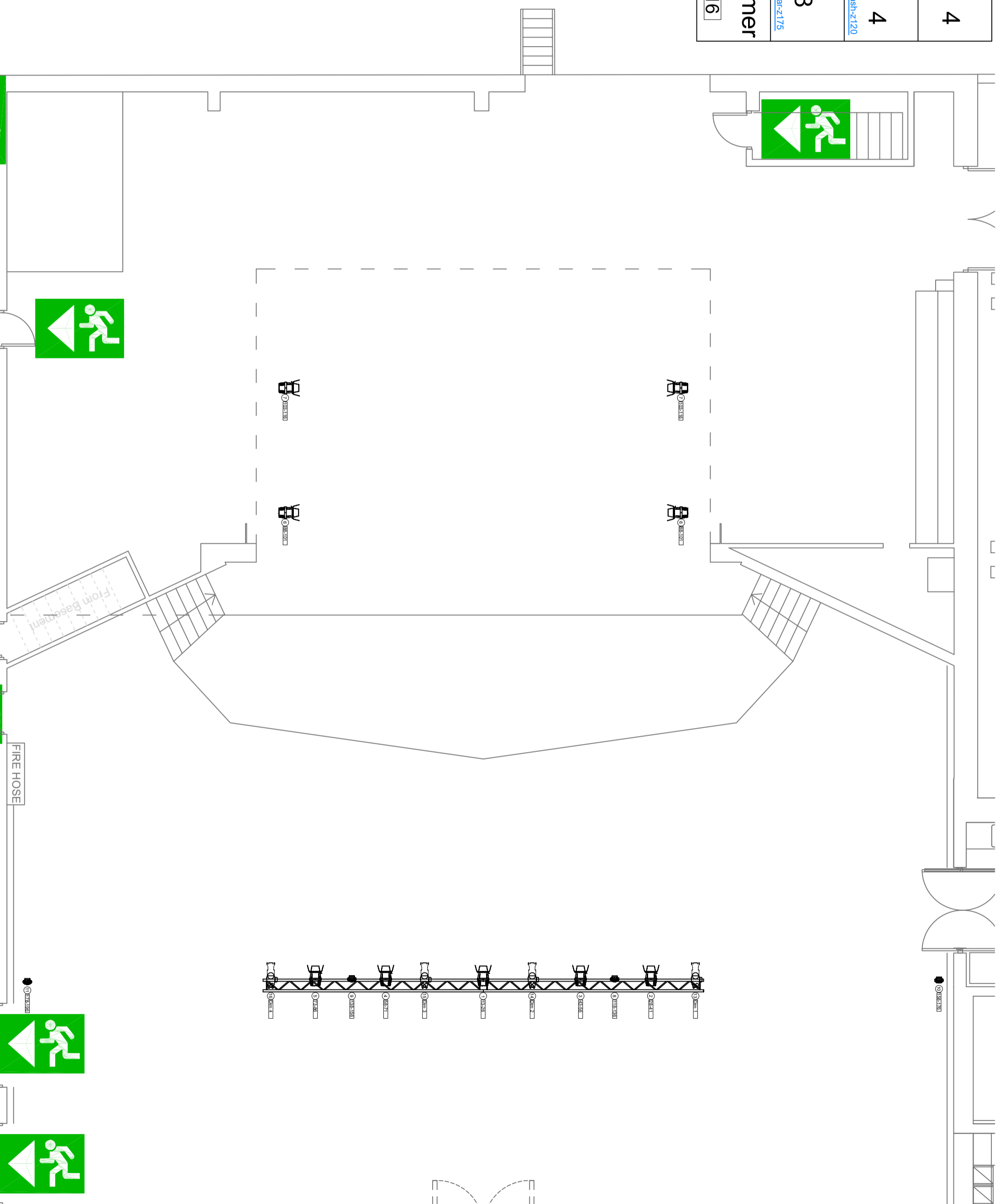
**Prompt corner** 4 x 32A Wilco outlet  
**Rear auditorium** 2 x 32A Wilco outlet

	Source4	4
	36°	

	Elation Fuze	4
Z120		
<a href="https://www.elationlighting.com/fuze-wash-z120">https://www.elationlighting.com/fuze-wash-z120</a>		

	Elation Fuze	8
Par Z175		
<a href="https://www.elationlighting.com/fuze-par-z175">https://www.elationlighting.com/fuze-par-z175</a>		

Channel DMX/Dimmer	
No 7	No 103-116



## AUDIO

### Control & Amplification

#### Mixer

Yamaha LS9-16

#### Speakers

FOH Speakers      Centre      2 x Meyer UPQ2P  
                                  Sides      1 x UPJ1P per side  
                                  Delay Rear      3 x UPM1P

Side fill                      2 x JBL Control 28T60 - 1 per side mounted on proscenium

### Dressing Rooms

Dressing Room	Capacity	Toilets	Shower	Other
1 Stage level	3	1	1	Air conditioner
2 Stage level	12	1	1	Air conditioner
3 (upstairs)	4	1	1	Air conditioner
4 (upstairs)	6	1	1	Air conditioner
5 (upstairs)	9	1	1	Air conditioner

## ADDITIONAL FACILITIES & INFORMATION

### Orchestral

Yamaha 9' Grand piano

### Loading Dock Access

**Vehicle access to dock from Carrington Ave**

**Loading Dock Height**                      1.5 metres

**Door Dimensions**                              5 metres High

4 metres Wide