

Dubbo Regional Theatre and Convention Centre Macquarie Auditorium

(750 seat Flat floor Auditorium with Stage)

Technical Specifications

Updated: December 2024

Technical & Production Coordinator: Andrew Earle

Phone number: 02 6801 4372
Fax number: 02 6801 4399
Mobile: 0418 270 500
Email: andrew.earle@dubbo.nsw.gov.au

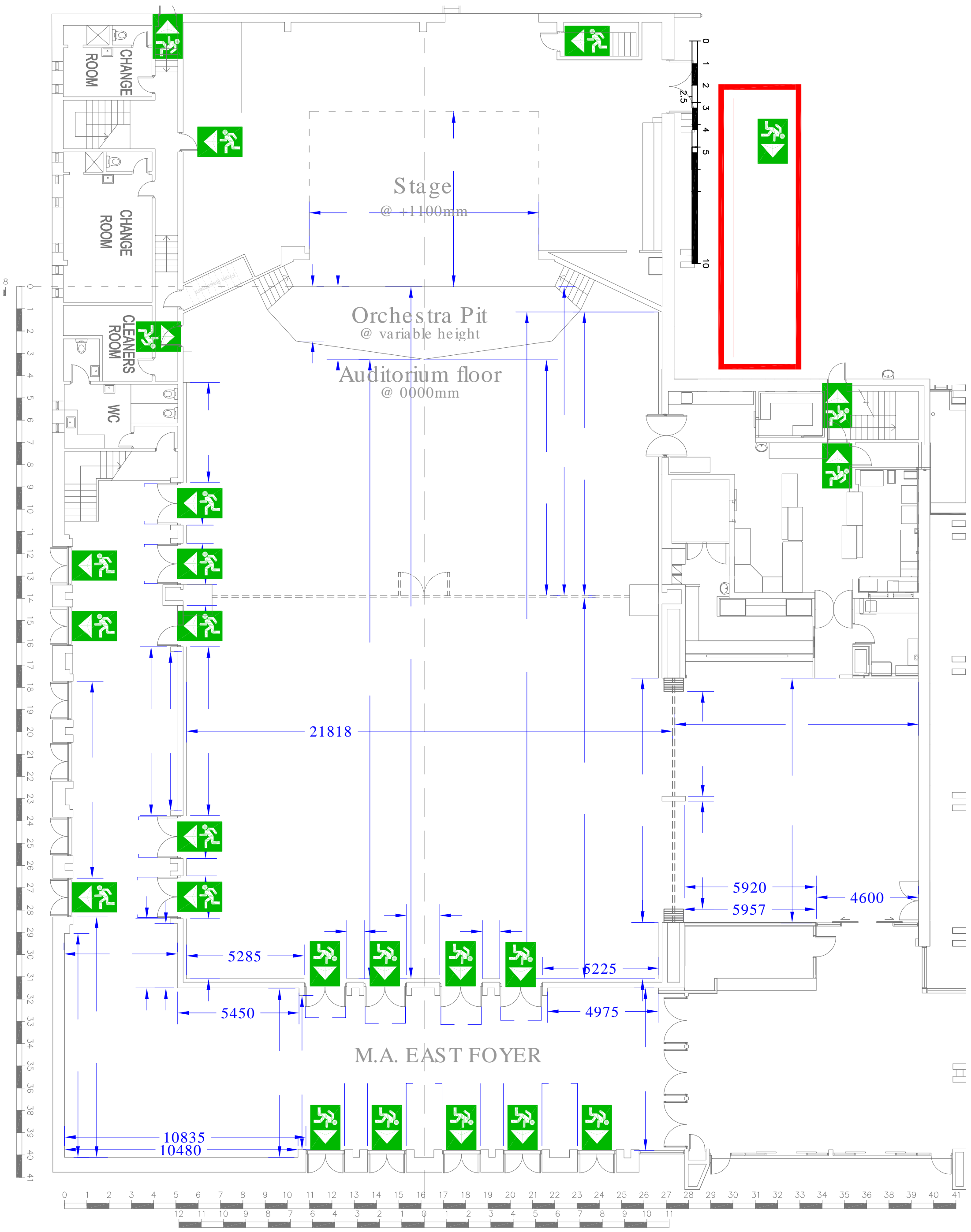
Senior Venue Technician:

James Collingridge

Phone number: 02 6801 4376
Phone number: 0459 658 147
Email address: james.collingridge@dubbo.nsw.gov.au

Venue:

Phone number: 02 6801 4378 (Box Office)
Website: www.drccc.com.au
Venue address: 155 Darling St, Dubbo NSW 2830
Postal address: PO Box 81, Dubbo, NSW 2830



Orchestra Lift / Pit:

Orchestra Pit ('Raised Stage')

Electric screw-jack operated orchestra lift

Stage level at 1.1 metres above auditorium.

Lift can be set at any height YES

Stage Dimensions:

Proscenium

Width 10.4m

Height 4.2m

Standard Performance Area: 7.8 metres x 10.2 metres

Distance From :

Stage Edge to DS edge of Orchestra Lift/Pit	at centre 3.3 metres
Stage Edge to last upstage fly line	7.8 metres
Stage Edge to rear wall	11.8 metres
Centre Line to OP wall (or obstruction)	10.6 metres DS, 7.9 metres US
Centre Line to PS wall (or obstruction)	10 metres DS, 6.1 metres US
Centre Line to Standard Masking line	5.1 metres

Lighting:

Lighting desk	LSC Mantra Lite 24
Control channels	512
Signal output	DMX 512

House Lights:

Control	Crestron system.
Control positions	Prompt corner, Mid-hall, Rear of hall
Fade time adjustable	NO

Stage Luminaries:

Profiles

Make	Model	Angle	Detail / Accessories	Watt	Total
ETC	Source 4	36°		650	4

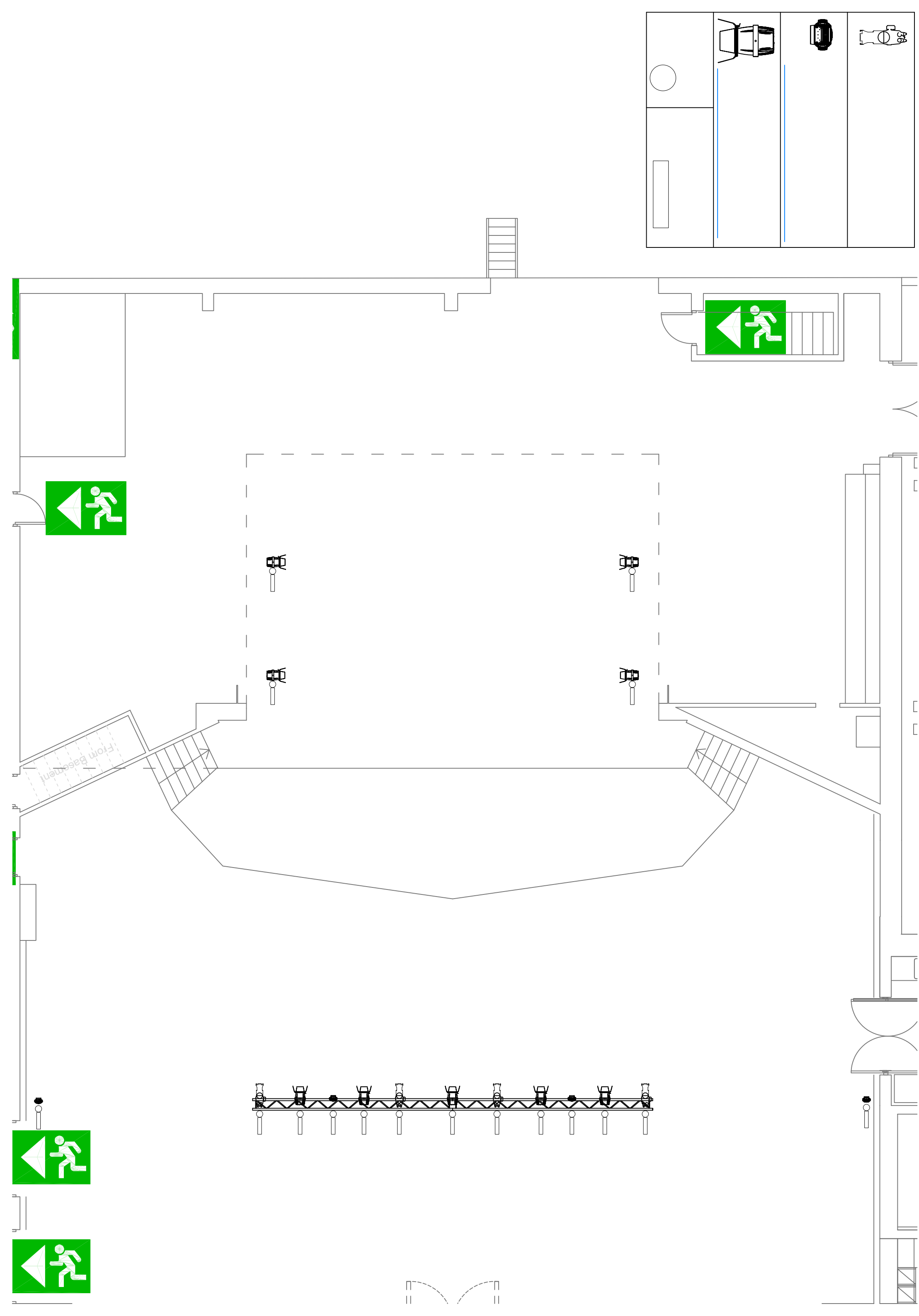
LED Fresnel/PC

Make	Model	Angle	Detail / Accessories	Watt	Total
Elation	Fuze Par Z175	8° - 35°	Barn Doors	175	9
Make	Model	Angle	Detail / Accessories	Watt	Total
Elation	Fuze Wash Z120	7° - 55°	Moving Wash	120	4

Power

3 Phase Outlets

Prompt corner	4 x 32A Wilco outlet
Rear auditorium	2 x 32A Wilco outlet



AUDIO

Control & Amplification

Mixer

Yamaha LS9-16

Speakers

FOH Speakers Centre 2 x Meyer UPQ2P
 Sides 1 x UPJ1P per side
 Delay Rear 3 x UPM1P

Side fill 2 x JBL Control 28T60 - 1 per side mounted on proscenium

Dressing Rooms

Dressing Room	Capacity	Toilets	Shower	Other
1 Stage level	3	1	1	Air conditioner
2 Stage level	12	1	1	Air conditioner
3 (upstairs)	4	1	1	Air conditioner
4 (upstairs)	6	1	1	Air conditioner
5 (upstairs)	9	1	1	Air conditioner

ADDITIONAL FACILITIES & INFORMATION

Orchestral

Yamaha 9' Grand piano

Loading Dock Access

Vehicle access to dock from Carrington Ave

Loading Dock Height 1.5 metres

Door Dimensions 5 metres High

4 metres Wide