

# Dubbo Regional Theatre & Convention Centre

## Theatre Technical Specifications

Updated: August 2025

### **Technical Team Leader:**

Phone number:

Mobile:

Email:

**James Collingridge**

02 02 6801 4374

0459 658 147

[james.collingridge@dubbo.nsw.gov.au](mailto:james.collingridge@dubbo.nsw.gov.au)

### **Venue Technician:**

Phone number:

Mobile:

Email address:

**Kevin Comber**

02 6801 4394

0429 889 546

[kevin.comber@dubbo.nsw.gov.au](mailto:kevin.comber@dubbo.nsw.gov.au)

### **Venue:**

Phone number:

Website:

Venue address:

Postal address:

Loading Dock:

02 6801 4378 (Box Office)

[www.drtcc.com.au](http://www.drtcc.com.au)

155 Darling St, Dubbo NSW 2830

PO Box 81, Dubbo NSW 2830

24 – 26 Carrington Ave

**Stage Dimensions:****Proscenium**

Width 11 to 13 metres \*Standard 11m (Motorised adjustable tormentors each side)

Height 8 to 5.65 metres \*Standard 6.5m (Motorised adjustable teaser)

**Distance From**

Stage Edge to DS edge of Orchestra Lift/Pit	2.7 metres
Stage Edge to last upstage fly line	10.3 metres
Stage Edge to rear wall	12.1 metres
Centre Line to OP wall (or obstruction)	9.8 metres DS, 10.8 metres US
Centre Line to PS wall (or obstruction)	9.1 metres
Centre Line to Standard Masking line	5 metres
Stage to underside of grid	19.8 metres

**Overhead obstructions**

PS Fly gallery to stage floor	<b>7.7 metres</b>
OP Fly gallery to stage floor	<b>7.0 metres</b>

**Auditorium:**

Auditorium is stalls only -

**Maximum 500 seats**

9 Seats can be removed for Sound desk in back rows 'O' & 'P'.

**Orchestra Lift / Pit:**

Stage level at	<b>1.1 metre</b> above auditorium.
Orchestra pit level at	<b>Variable</b>
Lift can be set at any height	<b>YES</b>
SWL of orchestra lift	<b>6.0 tonnes evenly distributed</b>
Dimensions of the orchestra pit	<b>Orchestra pit is 12.9 metres wide x 2.57 metres deep at Centre stage, with a convex front edge</b>

**Flying Facilities:****Fly System**

Single purchase counter-weight system

**Fly System Details**

Operating Position	<b>PS at Stage level</b>
Total number of Lines	<b>44 + House Curtain + 1 Panorama per side</b>
House Curtain	<b>House Curtain has motorised French Action</b>
Panorama Lines	<b>2 (line 45 - PS; line 46 - OP)</b>
Batten Drift	<b>19.8 metres</b>
Batten Type	<b>75mm x 50mm RHS</b>
Batten Length	<b>17.2 metres</b>
Batten Extensions	<b>N/A</b>
Batten Pick-ups	<b>6</b>
Batten Point Load	<b>140kg</b>
Batten W.L.L.	<b>500kg</b>
Cradle Capacity	<b>500kg</b>
LX bars can be swung	<b>At discretion of Technical Team Leader</b>
Fly bars can be swung	<b>At discretion of Technical Team Leader</b>

*SEE HANGING PLOT FOR LINE ALLOCATIONS AND FURTHER INFORMATION*

**There are two hand winched 12.5 metre Advance bars between the Proscenium and FOH Bridge 1. NOTE - THESE ARE NOT ACCESSIBLE FOR CABLING nor are they able to be masked**  
**Please do not allocate usage for these bars without first discussing your needs with the Technical Coordinator**

**Drapery:**

<b>*Type</b>	<b>Material</b>	<b>Colour</b>	<b>Width</b>	<b>Height</b>	<b>Quantity</b>
House Curtain	Velvet Showtec 100% fullness	Red	2 x 7.3m	8.5m	1
Borders	Wool, no fullness	Black	17.2m	3m	5
Legs (pairs)	Wool, no fullness	Black	3.5m	8.5m	6
Smother	Wool, no fullness	Black	17m	8.5m	1
Tabs (traveller)	Wool	Black	2 x 9.0m	8.5m	1
Cyclorama	Filled cloth	White	17m	8.5m	1

## **LIGHTING**

### **FOH Bridge #1**

Stage edge to lighting bar	<b>14.6 metres @ 60°</b>
Usable bar width	<b>14.5 metres</b>

### **FOH Bridge #2**

Stage edge to lighting bar	<b>16.7 metres @ 45°</b>
Usable bar width	<b>16 metres</b>

### **Auditorium Bar (Circle Front)**

Stage edge lighting bar	<b>22.5 metres @ 20°</b>
Usable bar width	<b>3 x 4 metres</b>

### **FOH Box Booms (PS & OP)**

Stage edge to FOH Boom	<b>11.2 metres @ 60°</b>
------------------------	--------------------------

*Distances are to the highest downstage point of boom or perch.*



Dubbo Regional Theatre and Convention Centre gratefully acknowledge the Creative Capital grant provided by Create NSW that provided the funding for this lighting rig in 2023.

### **Control:**

Lighting desk	<b>ETC Ion Xe 12k Lighting Console</b>
	<b>ETC EOS Motorised Fader Wing 20</b>
	<b>ETC EOS Fader Wing 40 non-motorised faders</b>
Control channels	<b>12288 parameters distributed via sACN</b>
Signal distribution	<b>Via LSC Nexus</b>

### **House Lights:**

**34 x ShowPro House Light FC RGBAL individually controllable via LX console+ incandescent stair lighting.**

Control positions	<b>Control room, Prompt corner, LX console.</b>
Fade time adjustable	<b>Yes, if controlled from the LX console.</b>

[Click here for ShowPro House Light Information](#)

**Stage Luminaires:**

Make	Model	Angle	Detail / Accessories	Watts	Total
Pro Lights	ECL CT Profile Plus	25°–50°	8 x iris 12 x Gobo Holder	264	<b>16</b>
Pro Lights	ECL CT Profile Plus	15°–30°	Shares above	264	<b>26</b>
Pro Lights	ECL Fresnel TW	15°–45°	20 x barndoors	260	<b>20</b>
Ayrton	Diablo S	6.7°–53°	Hybrid moving head	300	<b>45</b>
GLP	impression X5 IP	7°–50°	Cyc or Light Curtain	400	<b>12</b>

[Click here for ECL CT Profile + Information](#)

[Click here for ECL Fresnel TW Information](#)

[Click here for Ayrton Diablo S Information](#)

[Click here for GLP impression X5 IP Bar information](#)

**Followspots:**

Make	Model	Angle	Detail / Accessories	Watts	Total
Robert Juliat	Topaze	7°–14.5°	6 colour magazine	1200	<b>2</b>

**Additional:**

Item	Make	Model	Detail / Accessories	Total
Mirror Ball			20in diameter ball with motor	<b>1</b>
Smoke machine	HighEnd	F100		<b>1</b>
1Hazer	Unique	2.1		<b>1</b>

**NOTE: Smoke machines or Hazers may not be used unless DRTCC have been informed prior to tickets going on sale.**

**Dimmers:**

**Total Dimmers 348**

**Dimmer room located off OP fly gallery.**

**All dimmers are hard-wired to outlets or Wieland connectors around venue.**

2.4kw (10a) Dimmer Racks **JANDS WMXHR-H**

Total dimmers @ 3kw per dimmer **300**

6kw Dimmer Racks **JANDS HPX6-A**

Total dimmers @ 6kw per dimmer **48**

## **AUDIO**

**PLEASE NOTE:** The theatre is a very live room, having been designed primarily for acoustic performance. We frequently receive complaints about excessive volume from patrons of touring shows. This is known to affect ticket sales. Please be aware of audience comfort and enjoyment.

### **Control Positions**

#### **Control Room**

#### **Auditorium**

Located in centre of rows O & P at rear of stalls (Requires the removal of 9 seats)

#### **Other**

Prompt Corner

### **Control & Amplification**

#### **Mixer**

Yamaha LS9-32 digital console  
32 Inputs  
16 Outputs

#### **System Processing**

QSC Q-sys

### **Amplifiers**

#### **Auditorium**

5 x Crown XTI-4000  
1 x Crown CDI-1000

#### **Foyer and Paging**

3 x Crown CTS8200

### **Speakers**

#### **Auditorium**

Left	4 x JBL VRX928
Right	4 x JBL VRX928
Centre	4 x JBL VRX932
Subs	2 x JBL ASB6128
	2 x JBL PRX612M (Installed Stage Fill)

#### **Monitors**

2 x JBL PRX512M  
4 x QSC K10  
4 x QSC K10.2

**Microphones:**

Make	Model	Detail / Accessories	Use	Total
Shure	ULX-D4	Receiver		<b>4</b>
Shure	ULXD4D	Receiver		<b>2</b>
Shure	ULXD	Belt pack transmitters		<b>1</b>
Shure	WL84	Lapel microphones		<b>1</b>
Shure	ULXD2	Hand-held transmitters		<b>6</b>
Shure	Beta 58	Microphone	vocal	<b>3</b>
Shure	Beta 52A	Kick Drum Microphone	Kick Drum	<b>1</b>
Shure	MX412	Lectern Microphone	Lectern	<b>2</b>
Shure	SM 57	Microphone		<b>3</b>
Shure	PG48	Microphone		<b>3</b>
Behringer	Ultra DI	Active DI		<b>4</b>
DPA	4099P	Piano Mic		<b>2</b>
Lewitt	LCT 040	Small diaphragm Condenser		<b>2</b>
Lewitt	DTP 340 TT	Tom & Percussion Mic		<b>4</b>
Lewitt	LCT 140 AIR	Small diaphragm Condenser		<b>2</b>

**Playback:**

Qlab on Apple Macbook Pro M4 MAX

**Orchestral**

Yamaha TF 9' Concert Grand

**LECTERN**     Lectrum L101 Series x2**AUDIO VISUAL**

2 x Barco G60-W10 projectors

1 from Auditorium bar (equivalent to a circle front position)

1 rigged overhead with short throw lens when required

[Click here for Barco G60-W10 Information](#)

1 x 6m x 3.75m fastfold screen (5.8m by 3.55m image) 16:10

Front projection surface only.

## **STAGE**

### **Stage Manager's Console**

Stage Manager's desk is located in prompt corner. The desk can be moved within this area and is fitted with:

**Desk light**  
**1 x 10" LCD video monitor**  
**Clearcom Talkback Master Station**

### **Paging / Show relay**

Paging to the dressing rooms is available from the Stage Manager's desk. Show relay is distributed to all dressing rooms and green room.

### **Talkback**

Master Unit	<b>1 x Clearcom MS 702 (2 channels)</b>
Sub stations	<b>8 x Clearcom RS603 belt packs</b>

Talkback patching located throughout the venue (including):

Prompt & OP of stage  
 Control rooms  
 SM console  
 Fly rail  
 Fly galleries  
 Followspot positions (2)

### **MATV Facilities**

MATV infrastructure set-up in dressing rooms, green room, foyer and SM position. Camera located centre of the Auditorium bar. (Equivalent to a Circle Front position)

### **Staging Units:**

**5 x SICO 1800 Series Dual height stage:**

- **1220mm x 2440mm @ 410mm or 610mm high**

**5 x SICO 1800 Series Dual height stage:**

- **1220mm x 2440mm @ 610mm or 810mm high**

**2 x 2 step riser with handrail**

**2 x 3 step riser with handrail**

**Black skirts to suit**

[Click here for Sico Stage Information](#)



## **Laundry / Wardrobe**

Washing Machines	<b>1 x combination 8.5kg washing machine/steamer/dryer</b>
Dryer	<b>1 x 6kg Dryer</b>
Iron / ironing board	<b>1 of each</b>
Clothes racks	<b>1 per dressing room</b>

## **Greenroom**

Tea / Coffee facilities	<b>Yes</b>
Fridge / freezer	<b>Yes</b>
Microwave	<b>Yes</b>
Running hot/cold water	<b>Yes</b>

## **Stage Door Access**

Stage Door is located beside the loading dock at 24-26 Carrington Ave.

## **Greenroom**

Tea / Coffee facilities	<b>Yes</b>
Fridge / freezer	<b>Yes</b>
Microwave	<b>Yes</b>
Running hot/cold water	<b>Yes</b>

## **Dressing Rooms**

<b>Dressing Room</b>	<b>Capacity</b>	<b>Toilets</b>	<b>Shower</b>	<b>Details</b>
1	4	Yes	Yes	Red
2	4	Yes	Yes	Mustard
3	4	Yes	Yes	Purple
4	4	Yes	Yes	Green
5 Access	2	Yes	Yes	Charcoal
6 Chorus	20-30	Yes	Yes	Aqua
7 Chorus	20-30	Yes	Yes	Aqua
8 Make-Up	2	Yes	Yes	Charcoal

## **NOTE**

- Whilst every effort is made to fulfil Hirer requirements from in-house stock, no guarantee is made that the equipment listed will be available for a particular event due to damage or other circumstances beyond our control.
- Technical requirements are due at least four weeks prior to the show.
- Some equipment is shared between the Theatre and the Convention Centre and therefore may not always be available.
- This document may be changed without notice. Please contact the Technical Department to discuss your technical requirements.

# Rear Stage Crossover / FIRE CORRIDOR - NO STORAGE

Gallery Crossover @ Stage +9000

Access Ladder

PS Galleries over @ Stage + 9000

FLYTRAIL

OP	LEG
PS	LEG
44	CYC
43	SMOTHER
42	
41	
40	
39	LX7 / Flood
38	
37	LX6
36	
35	LEGS
34	BORDER
33	
32	
31	
30	LX 5
29	
28	LEGS
27	BORDER
26	TABS on TRACK
25	SCREEN 6x3.75m
24	
23	LX 4
22	
21	LEGS
20	BORDER
19	
18	
17	
16	
15	
14	LX 3
13	LEGS
12	BORDER
11	
10	
9	
8	LX 2
7	
6	LEGS
5	BORDER
4	
3	
2	LX 1
1	
House Curtain Teaser 56000	

Termination Rail off

Termination Rail on 169

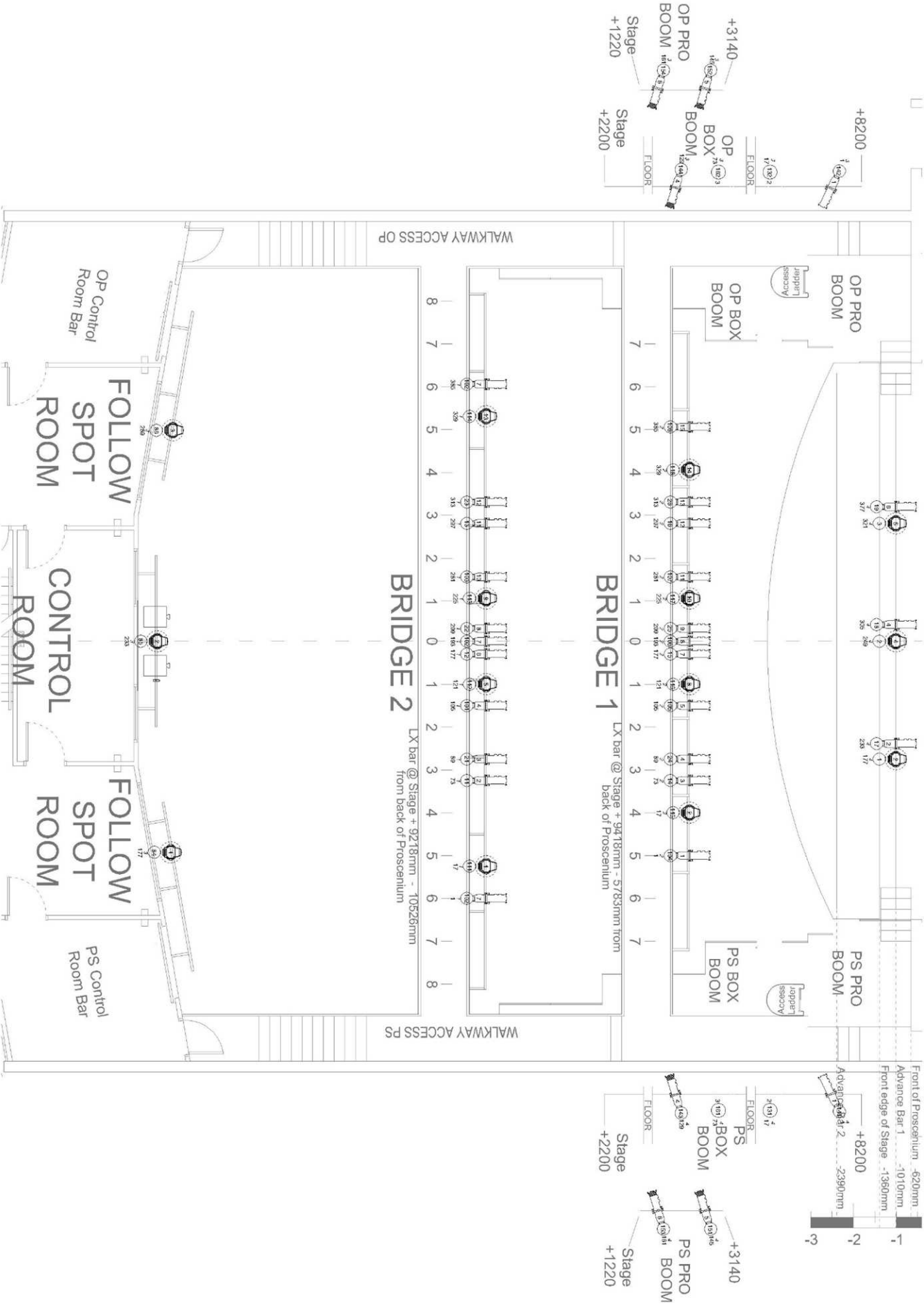
113

57

1

Termination Rail on Termination Rail off

Back of Proscenium





## HANGING PLOT DUBBO REGIONAL THEATRE

NOTE: All lines W.L.L. 500kg distributed

140kg maximum point load.

	Distance from front edge of Stage	Distance from back of Proscenium	Distance from back of Tormentors		
Front edge of Stage	<b>000</b>	<b>-1360</b>	<b>-1510</b>		
Back of Proscenium	1360	<b>000</b>	<b>-150</b>		
Back of Tormentors	1510	150	<b>000</b>		
Teaser	1640	280	130		
House Curtain	1890	530	380		
Line 1	2110	750	600		
Line 2	2320	960	810	LX 1	
Line 3	2510	1150	1000		
Line 4	2715	1355	1205		
Line 5	2870	1510	1360	Border	17200 x 3000
Line 6	3095	1735	1585	Legs	3500 x 8500
Line 7	3300	1940	1790		
Line 8	3525	2165	2015	LX 2	
Line 9	3720	2360	2210		
Line 10	3930	2570	2420		
Line 11	4130	2770	2620		
Line 12	4335	2975	2825	Border	17200 x 3000
Line 13	4530	3170	3020	Legs	3500 x 8500
Line 14	4735	3375	3225	LX 3	
Line 15	4930	3570	3420		
Line 16	5120	3760	3610		
Line 17	5330	3970	3820		
Line 18	5535	4175	4025		
Line 19	5730	4370	4220	Border	17200 x 3000
Line 20	5935	4575	4425	Legs	3500 x 8500
Line 21	6130	4770	4620		
Line 22	6330	4970	4820	LX 4	
Line 23	6520	5160	5010		
Line 24	6710	5350	5200	F/Fold Screen	6000 x 3750
Line 25	6845	5485	5335		
Line 26	7055	5695	5545	Tabs on Track	9000x8500 (2)
Line 27	7260	5900	5750	Border	17200 x 3000
Line 28	7445	6085	5935	Legs	3500 x 8500
Line 29	7655	6295	6145		
Line 30	7860	6500	6350	LX 5	
Line 31	8050	6690	6540		
Line 32	8250	6890	6740		
Line 33	8450	7090	6940		
Line 34	8645	7285	7135	Border	17200 x 3000
Line 35	8850	7490	7340	Legs	3500 x 8500
Line 36	9050	7690	7540		
Line 37	9310	7950	7800	LX 6	
Line 38	9485	8125	7975		
Line 39	9665	8305	8155	LX 7 - Cyc Floods	
Line 40	9865	8505	8355		
Line 41	10060	8700	8550		
Line 42	10265	8905	8755		
Line 43	10420	9060	8910	Smother	17000 x 8500
Line 44	10595	9235	9085	Cyc	17000 x 8500

All flying & loading of cradles to be conducted by DRTCC staff.

STANDARD ALLOCATION	INTENDED ALLOCATION
House Curtain 17000 x 8500	<b>Not Moveable</b>

