

# Dubbo Regional Theatre & Convention Centre

## Theatre Technical Specifications

Updated: 16/2/2024

**Technical & Production Coordinator: David Brown**

Phone number: 02 6801 4372

Mobile: 0418 270 500

Email: [david.brown@dubbo.nsw.gov.au](mailto:david.brown@dubbo.nsw.gov.au)

**Senior Venue Technician:**

**Blake Condon**

Phone number: 02 6801 4376

Phone number: 0459 658 147

Email address: [blake.condon@dubbo.nsw.gov.au](mailto:blake.condon@dubbo.nsw.gov.au)

**Venue Technician:**

**Kevin Comber**

Phone number: 02 6801 4394

Phone number: 0429 889 546

Email address: [kevin.comber@dubbo.nsw.gov.au](mailto:kevin.comber@dubbo.nsw.gov.au)

**Venue:**

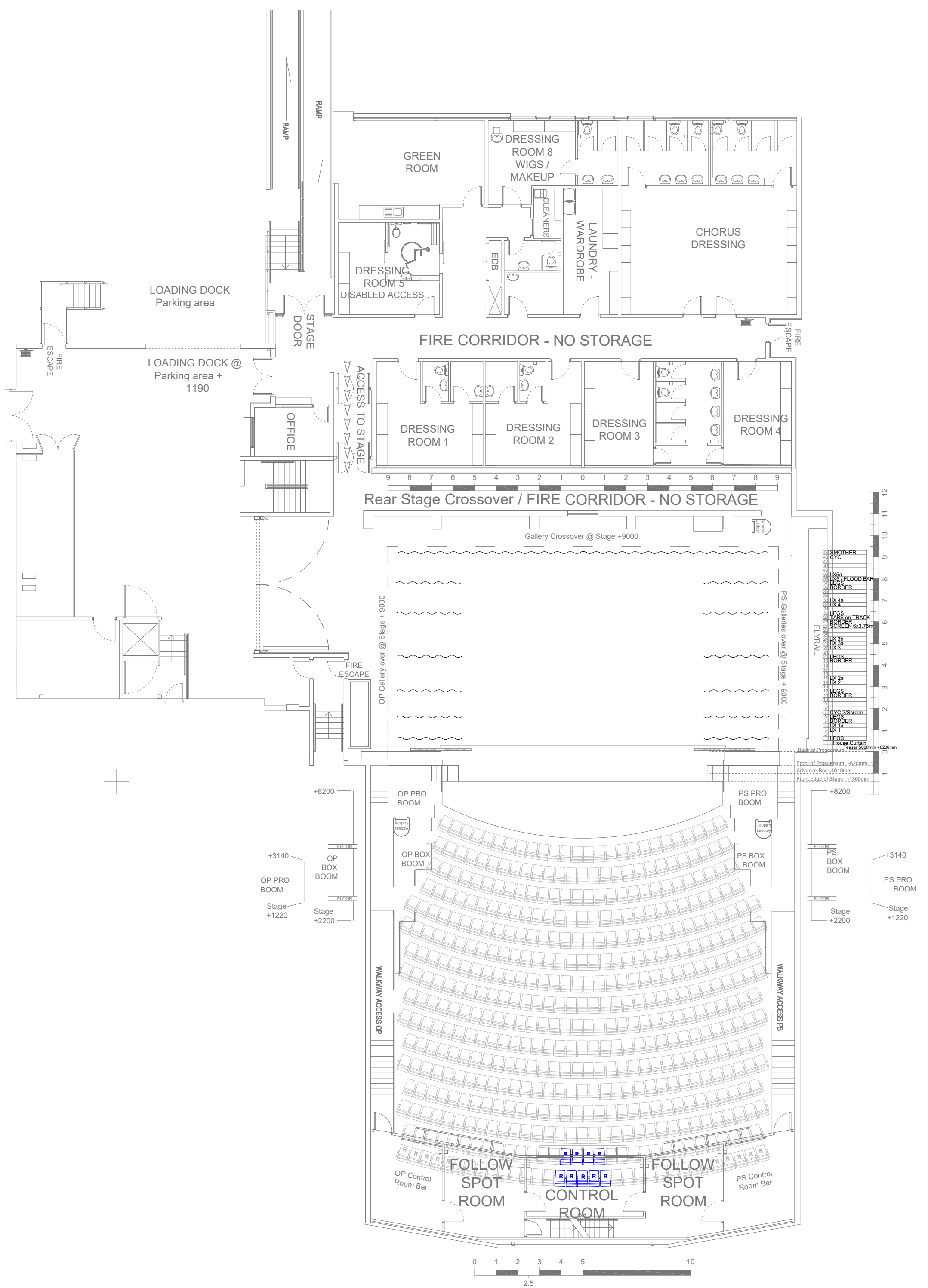
Phone number: 02 6801 4378 (Box Office)

Website: [www.drtcc.com.au](http://www.drtcc.com.au)

Venue address: 155 Darling St, Dubbo NSW 2830

Postal address: PO Box 81, Dubbo NSW 2830

Loading Dock: 24 – 26 Carrington Ave



## **Stage Dimensions:**

### **Proscenium**

Width 11 to 13 metres (Motorised adjustable tormentors each side)

Height 8 to 5 metres (Motorised adjustable teaser)

### **Distance From**

Stage Edge to DS edge of Orchestra Lift/Pit	2.7 metres
Stage Edge to last upstage fly line	10.3 metres
Stage Edge to rear wall	12.1 metres
Centre Line to OP wall (or obstruction)	9.8 metres DS, 10.8 metres US
Centre Line to PS wall (or obstruction)	9.1 metres
Centre Line to Standard Masking line	5 metres
Stage to underside of grid	19.8 metres

### **Overhead obstructions**

PS Fly gallery to stage floor	<b>7.7 metres</b>
OP Fly gallery to stage floor	<b>7.0 metres</b>

## **Auditorium:**

Auditorium is stalls only -

**Maximum 500 seats**

9 Seats can be removed for Sound desk in back rows 'O' & 'P'.

## **Orchestra Lift / Pit:**

Stage level at	<b>1.1 metre</b> above auditorium.
Orchestra pit level at	<b>Variable</b>
Lift can be set at any height	<b>YES</b>
SWL of orchestra lift	<b>6.0 tonnes evenly distributed</b>
Dimensions of the orchestra pit	<b>Orchestra pit is 12.9 metres wide x 2.57 metres deep at Centre stage, with a convex front edge</b>

## Flying Facilities:

### **Fly System**

Single purchase counter-weight system

### **Fly System Details**

Operating Position	<b>PS at Stage level</b>
Total number of Lines	<b>44 + House Curtain + 1 Panorama per side</b>
House Curtain	<b>House Curtain has motorised French Action</b>
Panorama Lines	<b>2 (line 45 - PS; line 46 - OP)</b>
Batten Drift	<b>19.8 metres</b>
Batten Type	<b>75mm x 50mm RHS</b>
Batten Length	<b>17.2 metres</b>
Batten Extensions	<b>N/A</b>
Batten Pick-ups	<b>6</b>
Batten Point Load	<b>140kg</b>
Batten W.L.L.	<b>500kg</b>
Cradle Capacity	<b>500kg</b>
LX bars can be swung	<b>NO</b>
Fly bars can be swung	<b>NO</b>

*SEE HANGING PLOT FOR LINE ALLOCATIONS AND FURTHER INFORMATION*

**There are two hand winched 12.5 metre Advance bars between the Proscenium and FOH Bridge 1. NOTE - THESE ARE NOT ACCESSIBLE FOR CABLING nor are they able to be masked**  
**Please do not allocate usage for these bars without first discussing your needs with the Technical Coordinator**

### Drapery:

<b>*Type</b>	<b>Material</b>	<b>Colour</b>	<b>Width</b>	<b>Height</b>	<b>Quantity</b>
House Curtain	Velvet Showtec 100% fullness	Red	2 x 7.3m	8.5m	1
Borders	Wool, no fullness	Black	17.2m	3m	5
Legs (pairs)	Wool, no fullness	Black	3.5m	8.5m	6
Smother	Wool, no fullness	Black	17m	8.5m	1
Tab (traveller)	Wool	Black	2 x 9.0m	8.5m	1
Cyclorama	Filled cloth	White	17m	8.5m	1
Cyclorama	Filled Cloth	White	17m	7m	1

Distance from front edge of Stage  <b>000</b>	Distance from back of Proscenium  <i>-1360</i>	Distance from back of Tormentors  <i>-1510</i>	<div>HANGING PLOT</div> <div>DUBBO REGIONAL THEATRE</div> <div>NOTE: All lines W.L.L. 500kg distributed</div>				Drift - 19371mm (Bottom of batten) To underside of grid - 20176mm Battens are 50 x 75mm RHS
1360	<b>000</b>	<i>-150</i>	Front edge of Stage	140kg maximum point load.			
1510	150	<b>000</b>	Back of Proscenium	All flying & loading of cradles to be conducted			
1640	280	130	Back of Tormentors	by DRTCC staff.			
1890	530	380	Teaser	STANDARD ALLOCATION	INTENDED ALLOCATION	NOTES	
2110	750	600	House Curtain	8500x17000	Not Moveable		
2320	960	810	Line 1	Legs	8500x3500		1
2510	1150	1000	Line 2				2
2715	1355	1205	Line 3	LX 1			3
2870	1510	1360	Line 4	LX 1a			4
3095	1735	1585	Line 5	Border	3000x17200		5
3300	1940	1790	Line 6	Legs	8500x3500		6
3525	2165	2015	Line 7	Cyc2	7500x17000		7
3720	2360	2210	Line 8				8
3930	2570	2420	Line 9				9
4130	2770	2620	Line 10				10
4335	2975	2825	Line 11	Border	3000x17200		11
4530	3170	3020	Line 12	Legs	8500x3500		12
4735	3375	3225	Line 13				13
4930	3570	3420	Line 14	LX 2			14
5120	3760	3610	Line 15	LX 2a			15
5330	3970	3820	Line 16				16
5535	4175	4025	Line 17				17
5730	4370	4220	Line 18				18
5935	4575	4425	Line 19	Border	3000x17200		19
6130	4770	4620	Line 20	Legs	8500x3500		20
6330	4970	4820	Line 21				21
6520	5160	5010	Line 22	LX 3			22
6710	5350	5200	Line 23	LX 3a			23
6845	5485	5335	Line 24				24
7055	5695	5545	Line 25				25
7260	5900	5750	Line 26				26
7445	6085	5935	Line 27	screen	6000x3750		27
7655	6295	6145	Line 28	Border	3000x17200		28
7860	6500	6350	Line 29	Tabs on Track	8500x9000 (2)		29
8050	6690	6540	Line 30	Legs	8500x3500		30
8250	6890	6740	Line 31				31
8450	7090	6940	Line 32	LX 4			32
8645	7285	7135	Line 33	LX 4a			33
8850	7490	7340	Line 34				34
9050	7690	7540	Line 35				35
9310	7950	7800	Line 36	Border	3000x17200		36
9485	8125	7975	Line 37	Legs	8500x3500		37
9665	8305	8155	Line 38	LX 5 - Floodbar			38
9865	8505	8355	Line 39	LX5a			39
10060	8700	8550	Line 40				40
10265	8905	8755	Line 41				41
10420	9060	8910	Line 42				42
10595	9235	9085	Line 43	Cyc	8500x17000		43
			Line 44	Smother	8500x17000		44

**Staging Units:**

**5 x SICO 1800 Series Dual height stage:**

- 1220mm x 2440mm @ 410mm or 610mm high

**5 x SICO 1800 Series Dual height stage:**

- 1220mm x 2440mm @ 610mm or 810mm high

**2 x 2 step riser with handrail**

**2 x 3 step riser with handrail**

**Black skirts to suit**

**[Click here for Sico Stage Information](#)**

## **LIGHTING**

### **FOH Bridge #1**

Stage edge to lighting bar	<b>14.6 metres @ 60°</b>
Usable bar width	<b>14.5 metres</b>

### **FOH Bridge #2**

Stage edge to lighting bar	<b>16.7 metres @ 45°</b>
Usable bar width	<b>16 metres</b>

### **Auditorium Bar (Circle Front)**

Stage edge lighting bar	<b>22.5 metres @ 20°</b>
Usable bar width	<b>3 x 4 metres</b>

### **FOH Box Booms (PS & OP)**

Stage edge to FOH Boom	<b>11.2 metres @ 60°</b>
------------------------	--------------------------

*Distances are to the highest downstage point of boom or perch.*



**Dubbo Regional Theatre and Convention Centre gratefully acknowledge the Creative Capital grant provided by Create NSW that provided the funding for this lighting rig in 2023.**

### **Control:**

Lighting desk	<b>ETC Ion Xe 12k Lighting Console</b>
	<b>ETC EOS Motorised Fader Wing 20</b>
	<b>ETC EOS Fader Wing 40 non-motorised faders</b>
Control channels	<b>12288 outputs distributed across up to 256 universes of DMX512</b>
Signal output	<b>sACN</b>
Signal distribution	<b>Via LSC Nexus</b>

## House Lights:

**34 x ShowPro House Light FC RGBAL individually controllable via LX console+ incandescent stair lighting.**

Control positions

**Control room, Prompt corner, LX console.**

Fade time adjustable

**Yes, if controlled from the LX console.**

[Click here for ShowPro House Light Information](#)

## Stage Luminaires:

Make	Model	Angle	Detail / Accessories	Watts	Total
Pro Lights	ECL CT Profile Plus	25°–50°	8 x iris 12 x Gobo Holder	264	<b>26</b>
Pro Lights	ECL CT Profile Plus	15°–30°	Shares above	264	<b>16</b>
Pro Lights	ECL Fresnel TW	15°–45°	20 x barndoors	260	<b>20</b>
Ayrton	Diablo S	6.7°–53°	Hybrid moving head	300	<b>45</b>
GLP	impression X5 IP	7°–50°	Cyc or Light Curtain	400	<b>12</b>

[Click here for ECL CT Profile + Information](#)

[Click here for ECL Fresnel TW Information](#)

[Click here for Ayrton Diablo S Information](#)

[Click here for GLP impression X5 IP Bar information](#)

## Followspots:

Make	Model	Angle	Detail / Accessories	Watts	Total
Robert Juliat	Topaze	7°–14.5°	6 colour magazine	1200	<b>2</b>
Tracking System	Zactrack Smart		5 trackers, 4 pucks	-	-

[Click here for Zac Track Smart information](#)

## Additional:

Item	Make	Model	Detail / Accessories	Total
Mirror Ball			20in diameter ball with motor	<b>1</b>
Smoke machine	HighEnd	F100		
Hazer	Unique	2.1		

**NOTE: Smoke machines or Hazers may not be used unless DRTCC have been informed prior to tickets going on sale.**



**Dimmers:****Total Dimmers 348****Dimmer room located off OP fly gallery.****All dimmers are hard-wired to outlets or Wieland connectors around venue.****2.4kw (10a) Dimmer Racks JANDS WMXHR-H****Total dimmers @ 3kw per dimmer 300****6kw Dimmer Racks JANDS HPX6-A****Total dimmers @ 6kw per dimmer 48**



## **AUDIO**

**PLEASE NOTE:** The theatre is a very live room, having been designed primarily for acoustic performance. We frequently receive complaints about excessive volume from patrons of touring shows. *This is known to affect ticket sales. Please be aware of audience comfort and enjoyment.*

### **Control Positions**

#### **Control Room**

#### **Auditorium**

Located in centre of rows O & P at rear of stalls (Requires the removal of 9 seats)

#### **Other**

Prompt Corner

### **Control & Amplification**

#### **Mixer**

Yamaha LS9-32 digital console  
32 Inputs  
16 Outputs

#### **System Processing**

BSS London Blu-160

### **Amplifiers**

#### **Auditorium**

5 x Crown XTI-4000  
1 x Crown CDI-1000

#### **Foyer and Paging**

3 x Crown CTS8200

### **Speakers**

#### **Auditorium**

Left	<b>4 x JBL VRX928</b>
Right	<b>4 x JBL VRX928</b>
Centre	<b>4 x JBL VRX932</b>
	<b>2 x JBL ASB6128</b>

## 2 x JBL PRX612M (Installed Stage Fill)

### Monitors

2 x JBL PRX512M

4 x QSC K10

4 x QSC K10.2

### Microphones:

Make	Model	Detail / Accessories	Use	Total
Shure	ULX-D4	Receiver		<b>4</b>
Shure	ULXD4D	Receiver		<b>2</b>
Shure	ULXD	Belt pack transmitters		<b>1</b>
Shure	WL84	Lapel microphones		<b>1</b>
Shure	ULXD2	Hand-held transmitters		<b>6</b>
Shure	Beta 58	Microphone	vocal	<b>3</b>
Shure	MX412	Lectern Microphone	Lectern	<b>1</b>
Shure	SM 57	Microphone		<b>4</b>
Shure	PG48	Microphone		<b>3</b>
Behringer	Ultra DI	Active DI		<b>4</b>
DPA	4099P	Piano Mic		<b>2</b>

### Playback:

Item	Make	Model	Detail	Total
CD Player	Numark	MP103		<b>2</b>

### Orchestral

Yamaha 9' Concert Grand

## **AUDIO VISUAL**

2 x Barco G60-W10 projectors

From Auditorium bar (equivalent to a circle front position)

[Click here for Barco G60-W10 Information](#)

1 x 6m x 3.75m fastfold screen (5.8m by 3.55m image) 16:10

Flown on line 27 as standard. Front projection surface only.

**LECTERN**    Lectrum L101 Series

## **STAGE**

### **Stage Manager's Console**

Stage Manager's desk is located in prompt corner. The desk can be moved within this area and is fitted with:

**Desk light**

**1 x 10" LCD video monitor**

**Clearcom Talkback Master Station**

### **Paging / Show relay**

Paging to the dressing rooms is available from the Stage Manager's desk. Show relay is distributed to all dressing rooms and green room.

### **Talkback**

Master Unit                    **1 x Clearcom MS 702 (2 channels)**

Sub stations                **8 x Clearcom RS603 belt packs**

Talkback patching located throughout the venue (including):

Prompt & OP of stage

Control rooms

SM console

Fly rail

Fly galleries

Followspot positions (2)

## MATV Facilities

MATV infrastructure set-up in dressing rooms, green room, foyer and SM position. Camera located centre of the Auditorium bar. (Equivalent to a Circle Front position)

### Laundry / Wardrobe

Washing Machines	<b>1 x combination 8.5kg washing machine/steamer/dryer</b>
Dryer	<b>1 x 6kg Dryer</b>
Iron / ironing board	<b>1 of each</b>
Clothes racks	<b>1 per dressing room</b>

### **Greenroom**

Tea / Coffee facilities	<b>Yes</b>
Fridge / freezer	<b>Yes</b>
Microwave	<b>Yes</b>
Running hot/cold water	<b>Yes</b>

### **Stage Door Access**

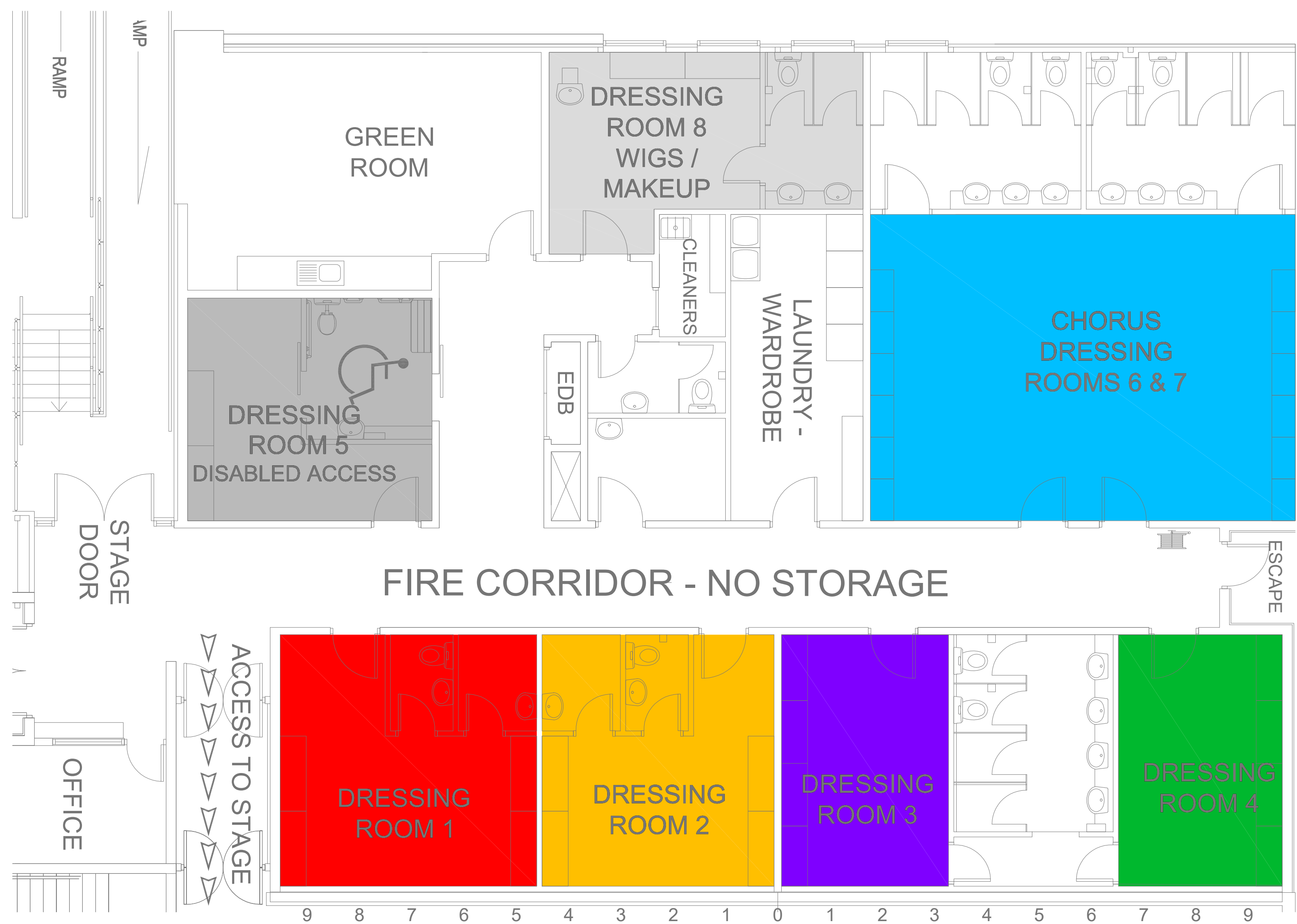
Stage Door is located beside the loading dock on Carrington Ave.

### **Greenroom**

Tea / Coffee facilities	<b>Yes</b>
Fridge / freezer	<b>Yes</b>
Microwave	<b>Yes</b>
Running hot/cold water	<b>Yes</b>

## **Dressing Rooms**

<b>Dressing Room</b>	<b>Capacity</b>	<b>Toilets</b>	<b>Shower</b>	<b>Details</b>
1	4	Yes	Yes	Red
2	4	Yes	Yes	Mustard
3	4	Yes	Yes	Purple
4	4	Yes	Yes	Green
5 Access	2	Yes	Yes	Charcoal
6 Chorus	20-30	Yes	Yes	Aqua
7 Chorus	20-30	Yes	Yes	Aqua
8 Make-Up	2	Yes	Yes	Charcoal





## **NOTE**

- Whilst every effort is made to fulfil Hirer requirements from in-house stock, no guarantee is made that the equipment listed will be available for a particular event due to damage or other circumstances beyond our control.
- Technical requirements are due at least four weeks prior to the show.
- Some equipment is shared between the Theatre and the Convention Centre and therefore is available on a "first in - best dressed" basis. i.e. Technical requirements received first take precedence.
- This document may be changed without notice. Please contact the Technical Department to discuss your technical requirements.