

Dubbo Regional Theatre & Convention Centre

Theatre Technical Specifications

Updated: 11/03/2025

Technical Team Leader:

Phone number:

Mobile:

Email:

Andrew Earle

02 6801 4372

0418 270 500

andrew.earle@dubbo.nsw.gov.au

Senior Venue Technician:

Phone number:

Phone number:

Email address:

James Collingridge

02 6801 4374

0459 658 147

james.collingridge@dubbo.nsw.gov.au

Venue:

Phone number:

Website:

Venue address:

Postal address:

Loading Dock:

02 6801 4378 (Box Office)

www.drctcc.com.au

155 Darling St, Dubbo NSW 2830

PO Box 81, Dubbo NSW 2830

24 – 26 Carrington Ave

Stage Dimensions:

Proscenium

Width 11 to 13 metres *Standard 11m (Motorised adjustable tormentors each side)

Height 8 to 5.65 metres *Standard 6.5m (Motorised adjustable teaser)

Distance From

| | |
|---|-------------------------------|
| Stage Edge to DS edge of Orchestra Lift/Pit | 2.7 metres |
| Stage Edge to last upstage fly line | 10.3 metres |
| Stage Edge to rear wall | 12.1 metres |
| Centre Line to OP wall (or obstruction) | 9.8 metres DS, 10.8 metres US |
| Centre Line to PS wall (or obstruction) | 9.1 metres |
| Centre Line to Standard Masking line | 5 metres |
| Stage to underside of grid | 19.8 metres |

Overhead obstructions

| | |
|-------------------------------|-------------------|
| PS Fly gallery to stage floor | 7.7 metres |
| OP Fly gallery to stage floor | 7.0 metres |

Auditorium:

Auditorium is stalls only -

Maximum 500 seats

9 Seats can be removed for Sound desk in back rows 'O' & 'P'.

Orchestra Lift / Pit:

| | |
|---------------------------------|---|
| Stage level at | 1.1 metre above auditorium. |
| Orchestra pit level at | Variable |
| Lift can be set at any height | YES |
| SWL of orchestra lift | 6.0 tonnes evenly distributed |
| Dimensions of the orchestra pit | Orchestra pit is 12.9 metres wide x 2.57 metres deep at Centre stage, with a convex front edge |

Flying Facilities:**Fly System**

Single purchase counter-weight system

Fly System Details

| | |
|-----------------------|--|
| Operating Position | PS at Stage level |
| Total number of Lines | 44 + House Curtain + 1 Panorama per side |
| House Curtain | House Curtain has motorised French Action |
| Panorama Lines | 2 (line 45 - PS; line 46 - OP) |
| Batten Drift | 19.8 metres |
| Batten Type | 75mm x 50mm RHS |
| Batten Length | 17.2 metres |
| Batten Extensions | N/A |
| Batten Pick-ups | 6 |
| Batten Point Load | 140kg |
| Batten W.L.L. | 500kg |
| Cradle Capacity | 500kg |
| LX bars can be swung | At discretion of Technical Team Leader |
| Fly bars can be swung | At discretion of Technical Team Leader |

SEE HANGING PLOT FOR LINE ALLOCATIONS AND FURTHER INFORMATION

There are two hand winched 12.5 metre Advance bars between the Proscenium and FOH Bridge 1. NOTE - THESE ARE NOT ACCESSIBLE FOR CABLING nor are they able to be masked
Please do not allocate usage for these bars without first discussing your needs with the Technical Coordinator

Drapery:

| *Type | Material | Colour | Width | Height | Quantity |
|------------------|------------------------------|---------------|--------------|---------------|-----------------|
| House Curtain | Velvet Showtec 100% fullness | Red | 2 x 7.3m | 8.5m | 1 |
| Borders | Wool, no fullness | Black | 17.2m | 3m | 5 |
| Legs (pairs) | Wool, no fullness | Black | 3.5m | 8.5m | 6 |
| Smother | Wool, no fullness | Black | 17m | 8.5m | 1 |
| Tabs (traveller) | Wool | Black | 2 x 9.0m | 8.5m | 1 |
| Cyclorama | Filled cloth | White | 17m | 8.5m | 1 |

LIGHTING

FOH Bridge #1

| | |
|----------------------------|--------------------------|
| Stage edge to lighting bar | 14.6 metres @ 60° |
| Usable bar width | 14.5 metres |

FOH Bridge #2

| | |
|----------------------------|--------------------------|
| Stage edge to lighting bar | 16.7 metres @ 45° |
| Usable bar width | 16 metres |

Auditorium Bar (Circle Front)

| | |
|-------------------------|--------------------------|
| Stage edge lighting bar | 22.5 metres @ 20° |
| Usable bar width | 3 x 4 metres |

FOH Box Booms (PS & OP)

| | |
|------------------------|--------------------------|
| Stage edge to FOH Boom | 11.2 metres @ 60° |
|------------------------|--------------------------|

Distances are to the highest downstage point of boom or perch.



Dubbo Regional Theatre and Convention Centre gratefully acknowledge the Creative Capital grant provided by Create NSW that provided the funding for this lighting rig in 2023.

Control:

| | |
|---------------------|---|
| Lighting desk | ETC Ion Xe 12k Lighting Console |
| | ETC EOS Motorised Fader Wing 20 |
| | ETC EOS Fader Wing 40 non-motorised faders |
| Control channels | 12288 parameters distributed via sACN |
| Signal distribution | Via LSC Nexus |

House Lights:

34 x ShowPro House Light FC RGBAL individually controllable via LX console+ incandescent stair lighting.

| | |
|----------------------|---|
| Control positions | Control room, Prompt corner, LX console. |
| Fade time adjustable | Yes, if controlled from the LX console. |

[Click here for ShowPro House Light Information](#)

Stage Luminaires:

| Make | Model | Angle | Detail / Accessories | Watts | Total |
|------------|---------------------|----------|------------------------------|-------|-----------|
| Pro Lights | ECL CT Profile Plus | 25°–50° | 8 x iris 12 x Gobo Holder | 264 | 16 |
| Pro Lights | ECL CT Profile Plus | 15°–30° | Shares above | 264 | 26 |
| Pro Lights | ECL Fresnel TW | 15°–45° | 20 x barndoors | 260 | 20 |
| Ayrton | Diablo S | 6.7°–53° | Hybrid moving head | 300 | 45 |
| GLP | impression X5 IP | 7°–50° | Cyc or Light Curtain | 400 | 12 |

[Click here for ECL CT Profile + Information](#)

[Click here for ECL Fresnel TW Information](#)

[Click here for Ayrton Diablo S Information](#)

[Click here for GLP impression X5 IP Bar information](#)

Followspots:

| Make | Model | Angle | Detail / Accessories | Watts | Total |
|---------------|--------|----------|----------------------|-------|----------|
| Robert Juliat | Topaze | 7°–14.5° | 6 colour magazine | 1200 | 2 |

Additional:

| Item | Make | Model | Detail / Accessories | Total |
|---------------|---------|-------|-------------------------------|----------|
| Mirror Ball | | | 20in diameter ball with motor | 1 |
| Smoke machine | HighEnd | F100 | | 1 |
| 1 Hazer | Unique | 2.1 | | 1 |

NOTE: Smoke machines or Hazers may not be used unless DRTCC have been informed prior to tickets going on sale.

Dimmers:

Total Dimmers 348

Dimmer room located off OP fly gallery.

All dimmers are hard-wired to outlets or Wieland connectors around venue.

2.4kw (10a) Dimmer Racks **JANDS WMXHR-H**

Total dimmers @ 3kw per dimmer **300**

6kw Dimmer Racks **JANDS HPX6-A**

Total dimmers @ 6kw per dimmer **48**

AUDIO

PLEASE NOTE: The theatre is a very live room, having been designed primarily for acoustic performance. We frequently receive complaints about excessive volume from patrons of touring shows. *This is known to affect ticket sales. Please be aware of audience comfort and enjoyment.*

Control Positions

Control Room

Auditorium

Located in centre of rows O & P at rear of stalls (Requires the removal of 9 seats)

Other

Prompt Corner

Control & Amplification

Mixer

Yamaha LS9-32 digital console
32 Inputs
16 Outputs

System Processing

QSC Q-sys

Amplifiers

Auditorium

5 x Crown XTI-4000
1 x Crown CDI-1000

Foyer and Paging

3 x Crown CTS8200

Speakers

Auditorium

| | |
|--------|--|
| Left | 4 x JBL VRX928 |
| Right | 4 x JBL VRX928 |
| Centre | 4 x JBL VRX932 |
| Subs | 2 x JBL ASB6128 |
| | 2 x JBL PRX612M (Installed Stage Fill) |

Monitors

2 x JBL PRX512M
4 x QSC K10
4 x QSC K10.2

Microphones:

| Make | Model | Detail / Accessories | Use | Total |
|-----------|-------------|---------------------------|-----------|----------|
| Shure | ULX-D4 | Receiver | | 4 |
| Shure | ULXD4D | Receiver | | 2 |
| Shure | ULXD | Belt pack transmitters | | 1 |
| Shure | WL84 | Lapel microphones | | 1 |
| Shure | ULXD2 | Hand-held transmitters | | 6 |
| Shure | Beta 58 | Microphone | vocal | 3 |
| Shure | Beta 52A | Kick Drum Microphone | Kick Drum | 1 |
| Shure | MX412 | Lectern Microphone | Lectern | 2 |
| Shure | SM 57 | Microphone | | 3 |
| Shure | PG48 | Microphone | | 3 |
| Behringer | Ultra DI | Active DI | | 4 |
| DPA | 4099P | Piano Mic | | 2 |
| Lewitt | LCT 040 | Small diaphragm Condenser | | 2 |
| Lewitt | DTP 340 TT | Tom & Percussion Mic | | 4 |
| Lewitt | LCT 140 AIR | Small diaphragm Condenser | | 2 |

Playback:

Qlab on Apple Macbook Pro M4 MAX

Orchestral

Yamaha TF 9' Concert Grand

LECTERN Lectrum L101 Series x2

AUDIO VISUAL

2 x Barco G60-W10 projectors

1 from Auditorium bar (equivalent to a circle front position)

1 rigged overhead with short throw lens when required

[Click here for Barco G60-W10 Information](#)

1 x 6m x 3.75m fastfold screen (5.8m by 3.55m image) 16:10

Front projection surface only.

STAGE

Stage Manager's Console

Stage Manager's desk is located in prompt corner. The desk can be moved within this area and is fitted with:

Desk light
1 x 10" LCD video monitor
Clearcom Talkback Master Station

Paging / Show relay

Paging to the dressing rooms is available from the Stage Manager's desk. Show relay is distributed to all dressing rooms and green room.

Talkback

| | |
|--------------|---|
| Master Unit | 1 x Clearcom MS 702 (2 channels) |
| Sub stations | 8 x Clearcom RS603 belt packs |

Talkback patching located throughout the venue (including):

Prompt & OP of stage
 Control rooms
 SM console
 Fly rail
 Fly galleries
 Followspot positions (2)

MATV Facilities

MATV infrastructure set-up in dressing rooms, green room, foyer and SM position. Camera located centre of the Auditorium bar. (Equivalent to a Circle Front position)

Staging Units:

5 x SICO 1800 Series Dual height stage:

- 1220mm x 2440mm @ 410mm or 610mm high

5 x SICO 1800 Series Dual height stage:

- 1220mm x 2440mm @ 610mm or 810mm high

2 x 2 step riser with handrail

2 x 3 step riser with handrail

Black skirts to suit

[Click here for Sico Stage Information](#)

Laundry / Wardrobe

| | |
|----------------------|--|
| Washing Machines | 1 x combination 8.5kg washing machine/steamer/dryer |
| Dryer | 1 x 6kg Dryer |
| Iron / ironing board | 1 of each |
| Clothes racks | 1 per dressing room |

Greenroom

| | |
|-------------------------|------------|
| Tea / Coffee facilities | Yes |
| Fridge / freezer | Yes |
| Microwave | Yes |
| Running hot/cold water | Yes |

Stage Door Access

Stage Door is located beside the loading dock at 24-26 Carrington Ave.

Greenroom

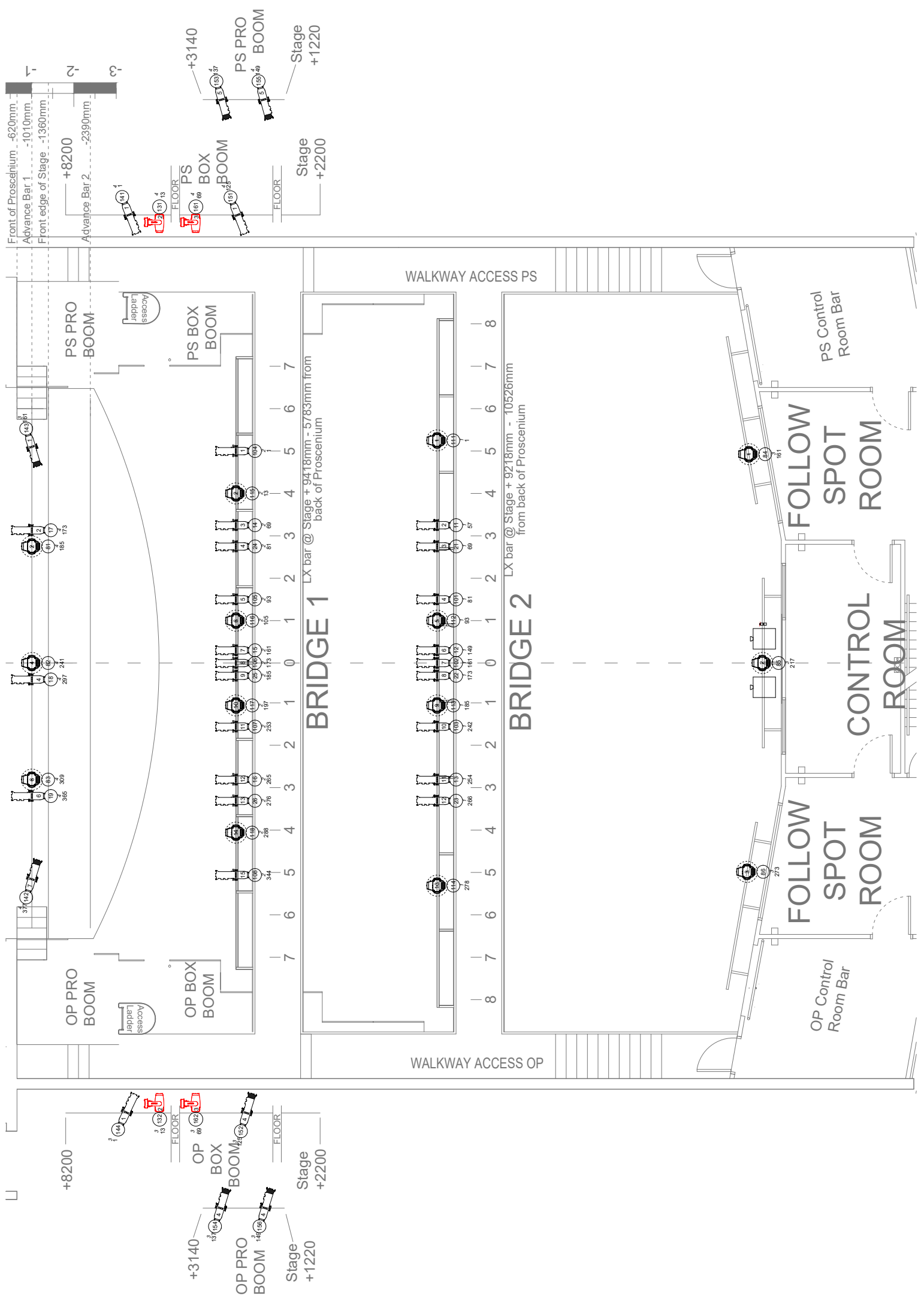
| | |
|-------------------------|------------|
| Tea / Coffee facilities | Yes |
| Fridge / freezer | Yes |
| Microwave | Yes |
| Running hot/cold water | Yes |

Dressing Rooms

| Dressing Room | Capacity | Toilets | Shower | Details |
|----------------------|-----------------|----------------|---------------|----------------|
| 1 | 4 | Yes | Yes | Red |
| 2 | 4 | Yes | Yes | Mustard |
| 3 | 4 | Yes | Yes | Purple |
| 4 | 4 | Yes | Yes | Green |
| 5 Access | 2 | Yes | Yes | Charcoal |
| 6 Chorus | 20-30 | Yes | Yes | Aqua |
| 7 Chorus | 20-30 | Yes | Yes | Aqua |
| 8 Make-Up | 2 | Yes | Yes | Charcoal |

NOTE

- Whilst every effort is made to fulfil Hirer requirements from in-house stock, no guarantee is made that the equipment listed will be available for a particular event due to damage or other circumstances beyond our control.
- Technical requirements are due at least four weeks prior to the show.
- Some equipment is shared between the Theatre and the Convention Centre and therefore may not always be available.
- This document may be changed without notice. Please contact the Technical Department to discuss your technical requirements.



9 8 7 6 5 4 3 2 1 0 1 2 3 4 5 6 7 8 9

Rear Stage Crossover / FIRE CORRIDOR - NO STORAGE

Access Ladder

Gallery Crossover @ Stage +9000

PS Galleries over @ Stage + 9000

| | |
|----|----------------|
| 45 | OP LEG |
| 44 | PS LEG |
| 43 | CYC |
| 42 | SMOTHER |
| 41 | |
| 40 | |
| 39 | LX 7 / Flood |
| 38 | |
| 37 | LX 6 |
| 36 | |
| 35 | LEGS |
| 34 | BORDER |
| 33 | |
| 32 | |
| 31 | LX 5 |
| 30 | |
| 29 | LEGS |
| 28 | BORDER |
| 27 | TABS on TRACK |
| 26 | |
| 25 | SCREEN 6x3.75m |
| 24 | |
| 23 | LX 4 |
| 22 | |
| 21 | LEGS |
| 20 | BORDER |
| 19 | |
| 18 | |
| 17 | |
| 16 | |
| 15 | |
| 14 | LX 3 |
| 13 | LEGS |
| 12 | BORDER |
| 11 | |
| 10 | |
| 9 | LX 2 |
| 8 | |
| 7 | LEGS |
| 6 | BORDER |
| 5 | |
| 4 | |
| 3 | |
| 2 | LX 1 |
| 1 | |
| | House Curtain |
| | Teaser 5600r |

Tomteator full off

Tomteator full on

Tomteator full off

Tomteator full on

Tomteator full off

Tomteator full on

Back of Proscenium

House Lights are ShowPro House Light FC RGBAL
used in 10ch mode.

LANTERN NUMBER STAIR LIGHTS - Universe 40
CHANNEL (not drawn) - Address 401- 412
UNIVERSE
DMX_ADDRESS Channel 1061 - 1072

- | | | | |
|---|-----|-----|----|
| 1 | 001 | 401 | 1 |
| 2 | 002 | 402 | 11 |
| 3 | 003 | 403 | 21 |
| 4 | 004 | 404 | 31 |
| 5 | 005 | 405 | 41 |
| 6 | 006 | 406 | 51 |
| 7 | 007 | 407 | 61 |

- | | | | |
|----|-----|-----|-----|
| 8 | 008 | 408 | 71 |
| 9 | 009 | 409 | 81 |
| 10 | 010 | 410 | 91 |
| 11 | 011 | 411 | 101 |
| 12 | 012 | 412 | 111 |
| 13 | 013 | 413 | 121 |
| 14 | 014 | 414 | 131 |

- | | | | |
|----|-----|-----|-----|
| 15 | 015 | 415 | 141 |
| 16 | 016 | 416 | 151 |
| 17 | 017 | 417 | 161 |
| 18 | 018 | 418 | 171 |
| 19 | 019 | 419 | 181 |
| 20 | 020 | 420 | 191 |
| 21 | 021 | 421 | 201 |

- | | | | |
|----|-----|-----|-----|
| 22 | 022 | 422 | 211 |
| 23 | 023 | 423 | 221 |
| 24 | 024 | 424 | 231 |
| 25 | 025 | 425 | 241 |
| 26 | 026 | 426 | 251 |
| 27 | 027 | 427 | 261 |
| 28 | 028 | 428 | 271 |

- | | | | |
|----|-----|-----|-----|
| 29 | 029 | 429 | 281 |
| 30 | 030 | 430 | 291 |
| 31 | 031 | 431 | 301 |
| 32 | 032 | 432 | 311 |
| 33 | 033 | 433 | 321 |
| 34 | 034 | 434 | 331 |
| 35 | 035 | 435 | 341 |

WALKWAY ACCESS OP

