

Dubbo Regional Theatre & Convention Centre

Theatre Technical Specifications

Updated: 10/02/2026

Technical Team Leader:

Phone number:

Mobile:

Email:

James Collingridge

02 02 6801 4374

0459 658 147

james.collingridge@dubbo.nsw.gov.au

Venue Technician:

Phone number:

Phone number:

Email address:

Nathan Exelby

02 6801 4394

0429 889 546

Nathan.Exelby@dubbo.nsw.gov.au

Venue:

Phone number:

Website:

Venue address:

Postal address:

Loading Dock:

02 6801 4378 (Box Office)

www.drctcc.com.au

155 Darling St, Dubbo NSW 2830

PO Box 81, Dubbo NSW 2830

24 – 26 Carrington Ave

Stage Dimensions:**Proscenium**

Width 11 to 13 metres *Standard 11m (Motorised adjustable tormentors each side)

Height 8 to 5.65 metres *Standard 6.5m (Motorised adjustable teaser)

Distance From

Stage Edge to DS edge of Orchestra Lift/Pit	2.7 metres
Stage Edge to last upstage fly line	10.3 metres
Stage Edge to rear wall	12.1 metres
Centre Line to OP wall (or obstruction)	9.8 metres DS, 10.8 metres US
Centre Line to PS wall (or obstruction)	9.1 metres
Centre Line to Standard Masking line	5 metres
Stage to underside of grid	19.8 metres

Overhead obstructions

PS Fly gallery to stage floor	7.7 metres
OP Fly gallery to stage floor	7.0 metres

Auditorium:

Auditorium is stalls only -

Maximum 500 seats

9 Seats can be removed for Sound desk in back rows 'O' & 'P'.

Orchestra Lift / Pit:

Stage level at	1.1 metre above auditorium.
Orchestra pit level at	Variable
Lift can be set at any height	YES
SWL of orchestra lift	6.0 tonnes evenly distributed
Dimensions of the orchestra pit	Orchestra pit is 12.9 metres wide x 2.57 metres deep at Centre stage, with a convex front edge

Flying Facilities:**Fly System**

Single purchase counter-weight system

Fly System Details

Operating Position	PS at Stage level
Total number of Lines	44 + House Curtain + 1 Panorama per side
House Curtain	House Curtain has motorised French Action
Panorama Lines	2 (line 45 - PS; line 46 - OP)
Batten Drift	19.8 metres
Batten Type	75mm x 50mm RHS
Batten Length	17.2 metres
Batten Extensions	N/A
Batten Pick-ups	6
Batten Point Load	140kg
Batten W.L.L.	500kg
Cradle Capacity	500kg

SEE HANGING PLOT FOR LINE ALLOCATIONS AND FURTHER INFORMATION

There are two hand winched 12.5 metre Advance bars between the Proscenium and FOH Bridge 1. NOTE - THESE ARE NOT ACCESSIBLE FOR CABLING nor are they able to be masked
Please do not allocate usage for these bars without first discussing your needs with the Technical Coordinator

Drapery:

*Type	Material	Colour	Width	Height	Quantity
House Curtain	Velvet Showtec 100% fullness	Red	2 x 7.3m	8.5m	1
Borders	Wool, no fullness	Black	17.2m	3m	5
Legs (pairs)	Wool, no fullness	Black	3.5m	8.5m	6
Smother	Wool, no fullness	Black	17m	8.5m	1
Tabs (traveller)	Wool	Black	2 x 9.0m	8.5m	1
Cyclorama	Filled cloth	White	17m	8.5m	1

LIGHTING

FOH Bridge #1

Stage edge to lighting bar	14.6 metres @ 60°
Usable bar width	14.5 metres

FOH Bridge #2

Stage edge to lighting bar	16.7 metres @ 45°
Usable bar width	16 metres

Auditorium Bar (Circle Front)

Stage edge lighting bar	22.5 metres @ 20°
Usable bar width	3 x 4 metres

FOH Box Booms (PS & OP)

Stage edge to FOH Boom	11.2 metres @ 60°
------------------------	--------------------------

Distances are to the highest downstage point of boom or perch.



Dubbo Regional Theatre and Convention Centre gratefully acknowledge the Creative Capital grant provided by Create NSW that provided the funding for this lighting rig in 2023.

Control:

Lighting desk	ETC Ion Xe 12k Lighting Console
	ETC EOS Motorised Fader Wing 20
	ETC EOS Fader Wing 40 non-motorised faders
Control channels	12288 parameters distributed via sACN
Signal distribution	Via LSC Nexus

House Lights:

34 x ShowPro House Light FC RGBAL individually controllable via LX console+ incandescent stair lighting.

Control positions	Control room, Prompt corner, LX console.
Fade time adjustable	Yes, if controlled from the LX console.

[Click here for ShowPro House Light Information](#)

Stage Luminaires:

Make	Model	Angle	Detail / Accessories	Watts	Total
Pro Lights	ECL CT Profile Plus	25°–50°	8 x iris 12 x Gobo Holder	264	16
Pro Lights	ECL CT Profile Plus	15°–30°	Shares above	264	26
Pro Lights	ECL Fresnel TW	15°–45°	20 x barndoors	260	20
Ayrton	Diablo S	6.7°–53°	Hybrid moving head	300	45
GLP	impression X5 IP	7°–50°	Cyc or Light Curtain	400	12

[Click here for ECL CT Profile + Information](#)

[Click here for ECL Fresnel TW Information](#)

[Click here for Ayrton Diablo S Information](#)

[Click here for GLP impression X5 IP Bar information](#)

Followspots:

Make	Model	Angle	Detail / Accessories	Watts	Total
Robert Juliat	Topaze	7°–14.5°	6 colour magazine	1200	2

Additional:

Item	Make	Model	Detail / Accessories	Total
Mirror Ball			20in diameter ball with motor	1
Smoke machine	HighEnd	F100		1
1 Hazer	Unique	2.1		1

NOTE: Smoke machines or Hazers may not be used unless DRTCC have been informed prior to tickets going on sale.

Dimmers:

Total Dimmers 348

Dimmer room located off OP fly gallery.

All dimmers are hard-wired to outlets or Wieland connectors around venue.

2.4kw (10a) Dimmer Racks **JANDS WMXHR-H**

Total dimmers @ 3kw per dimmer **300**

6kw Dimmer Racks **JANDS HPX6-A**

Total dimmers @ 6kw per dimmer **48**

AUDIO

PLEASE NOTE: The theatre is a very live room, having been designed primarily for acoustic performance. We frequently receive complaints about excessive volume from patrons of touring shows. *This is known to affect ticket sales. Please be aware of audience comfort and enjoyment.*

Control Positions

Control Room

Auditorium

Located in centre of rows O & P at rear of stalls (Requires the removal of 9 seats)

Other

Prompt Corner

Control & Amplification

Mixer

Yamaha LS9-32 digital console
32 Inputs
16 Outputs

System Processing

QSC Q-sys

Amplifiers

Auditorium

5 x Crown XTI-4000
1 x Crown CDI-1000

Foyer and Paging

3 x Crown CTS8200

Speakers

Auditorium

Left	4 x JBL VRX928
Right	4 x JBL VRX928
Centre	4 x JBL VRX932
Subs	2 x JBL ASB6128
	2 x JBL PRX612M (Installed Stage Fill)

Monitors

2 x JBL PRX512M
4 x QSC K10
4 x QSC K10.2

Microphones:

Make	Model	Detail / Accessories	Use	Total
Shure	ULX-D4	Receiver		4
Shure	ULXD4D	Receiver		2
Shure	ULXD	Belt pack transmitters		1
Shure	WL84	Lapel microphones		1
Shure	ULXD2	Hand-held transmitters		6
Shure	Beta 58	Microphone	vocal	3
Shure	Beta 52A	Kick Drum Microphone	Kick Drum	1
Shure	MX412	Lectern Microphone	Lectern	2
Shure	SM 57	Microphone		3
Shure	PG48	Microphone		3
Behringer	Ultra DI	Active DI		4
DPA	4099P	Piano Mic		2
Lewitt	LCT 040	Small diaphragm Condenser		2
Lewitt	DTP 340 TT	Tom & Percussion Mic		4
Lewitt	LCT 140 AIR	Small diaphragm Condenser		2

Playback:

Qlab on Apple Macbook Pro M4 MAX

Orchestral

Yamaha TF 9' Concert Grand

LECTERN 2x Lectrum L101 Series

AUDIO VISUAL

2 x Barco G60-W10 projectors

1 from Auditorium bar (equivalent to a circle front position)

1 rigged overhead with short throw lens when required

[Click here for Barco G60-W10 Information](#)

1 x 6m x 3.75m fastfold screen (5.8m by 3.55m image) 16:10

Front projection surface only.

STAGE

Stage Manager's Console

Stage Manager's desk is located in prompt corner. The desk can be moved within this area and is fitted with:

Desk light
1 x 10" LCD video monitor
Clearcom Talkback Master Station

Paging / Show relay

Paging to the dressing rooms is available from the Stage Manager's desk. Show relay is distributed to all dressing rooms and green room.

Talkback

Master Unit	1 x Clearcom MS 702 (2 channels)
Sub stations	8 x Clearcom RS603 belt packs

Talkback patching located throughout the venue (including):

Prompt & OP of stage
 Control rooms
 SM console
 Fly rail
 Fly galleries
 Followspot positions (2)

MATV Facilities

MATV infrastructure set-up in dressing rooms, green room, foyer and SM position. Camera located centre of the Auditorium bar. (Equivalent to a Circle Front position)

Staging Units:

5 x SICO 1800 Series Dual height stage:

- **1220mm x 2440mm @ 410mm or 610mm high**

5 x SICO 1800 Series Dual height stage:

- **1220mm x 2440mm @ 610mm or 810mm high**

2 x 2 step riser with handrail

2 x 3 step riser with handrail

Black skirts to suit

[Click here for Sico Stage Information](#)

Laundry / Wardrobe

Washing Machines	1 x combination 8.5kg washing machine/steamer/dryer
Dryer	1 x 6kg Dryer
Iron / ironing board	1 of each
Clothes racks	1 per dressing room

Greenroom

Tea / Coffee facilities	Yes
Fridge / freezer	Yes
Microwave	Yes
Running hot/cold water	Yes

Stage Door Access

Stage Door is located beside the loading dock at 24-26 Carrington Ave.

Greenroom

Tea / Coffee facilities	Yes
Fridge / freezer	Yes
Microwave	Yes
Running hot/cold water	Yes

Dressing Rooms

Dressing Room	Capacity	Toilets	Shower	Details
1	4	Yes	Yes	Red
2	4	Yes	Yes	Mustard
3	4	Yes	Yes	Purple
4	4	Yes	Yes	Green
5 Access	2	Yes	Yes	Charcoal
6 Chorus	20-30	Yes	Yes	Aqua
7 Chorus	20-30	Yes	Yes	Aqua
8 Make-Up	2	Yes	Yes	Charcoal

NOTE

- Whilst every effort is made to fulfil Hirer requirements from in-house stock, no guarantee is made that the equipment listed will be available for a particular event due to damage or other circumstances beyond our control.
- Technical requirements are due at least four weeks prior to the show.
- Some equipment is shared between the Theatre and the Convention Centre and therefore may not always be available.
- This document may be changed without notice. Please contact the Technical Department to discuss your technical requirements.

HANGING PLOT DUBBO REGIONAL THEATRE

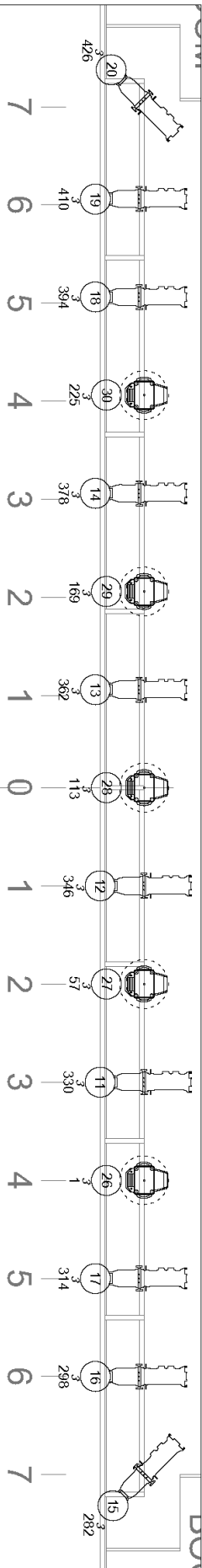
NOTE: All lines W.L.L. 500kg distributed

140kg maximum point load.

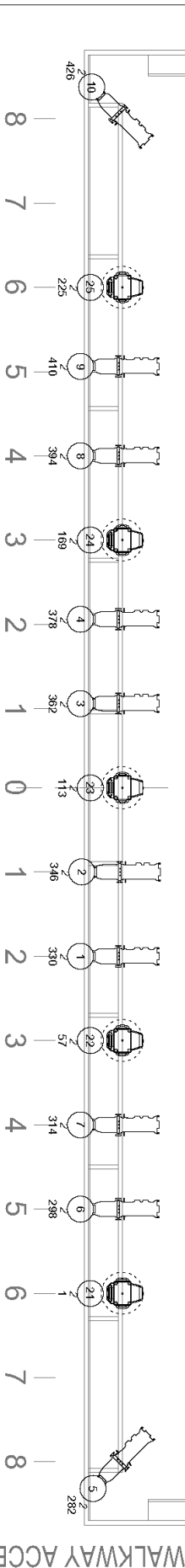
	Distance from front edge of Stage	Distance from back of Proscenium	Distance from back of Tormentors		
Front edge of Stage	000	-1360	-1510		
Back of Proscenium	1360	000	-150		
Back of Tormentors	1510	150	000		
Teaser	1640	280	130		
House Curtain	1890	530	380		
Line 1	2110	750	600	House Curtain	17000 x 8500
Line 2	2320	960	810	Legs	3500 x 8500
Line 3	2510	1150	1000	LX 1	
Line 4	2715	1355	1205		
Line 5	2870	1510	1360	Border	17200 x 3000
Line 6	3095	1735	1585	Legs	3500 x 8500
Line 7	3300	1940	1790		
Line 8	3525	2165	2015	LX 2	
Line 9	3720	2360	2210		
Line 10	3930	2570	2420		
Line 11	4130	2770	2620		
Line 12	4335	2975	2825	Border	17200 x 3000
Line 13	4530	3170	3020	Legs	3500 x 8500
Line 14	4735	3375	3225	LX 3	
Line 15	4930	3570	3420		
Line 16	5120	3760	3610		
Line 17	5330	3970	3820		
Line 18	5535	4175	4025		
Line 19	5730	4370	4220	Border	17200 x 3000
Line 20	5935	4575	4425	Legs	3500 x 8500
Line 21	6130	4770	4620		
Line 22	6330	4970	4820	LX 4	
Line 23	6520	5160	5010		
Line 24	6710	5350	5200	F/Fold Screen	6000 x 3750
Line 25	6845	5485	5335		
Line 26	7055	5695	5545	Tabs on Track	9000x8500 (2)
Line 27	7260	5900	5750	Border	17200 x 3000
Line 28	7445	6085	5935	Legs	3500 x 8500
Line 29	7655	6295	6145		
Line 30	7860	6500	6350		
Line 31	8050	6690	6540	LX 5	
Line 32	8250	6890	6740		
Line 33	8450	7090	6940		
Line 34	8645	7285	7135	Border	17200 x 3000
Line 35	8850	7490	7340	Legs	3500 x 8500
Line 36	9050	7690	7540		
Line 37	9310	7950	7800	LX 6	
Line 38	9485	8125	7975		
Line 39	9665	8305	8155	LX 7 - Cyc Floods	
Line 40	9865	8505	8355		
Line 41	10060	8700	8550		
Line 42	10265	8905	8755		
Line 43	10420	9060	8910	Cyc	17000 x 8500
Line 44	10595	9235	9085	Smother	17000 x 8500

All flying & loading of cradles to be conducted by DRTCC staff.
STANDARD ALLOCATION INTENDED ALLOCATION

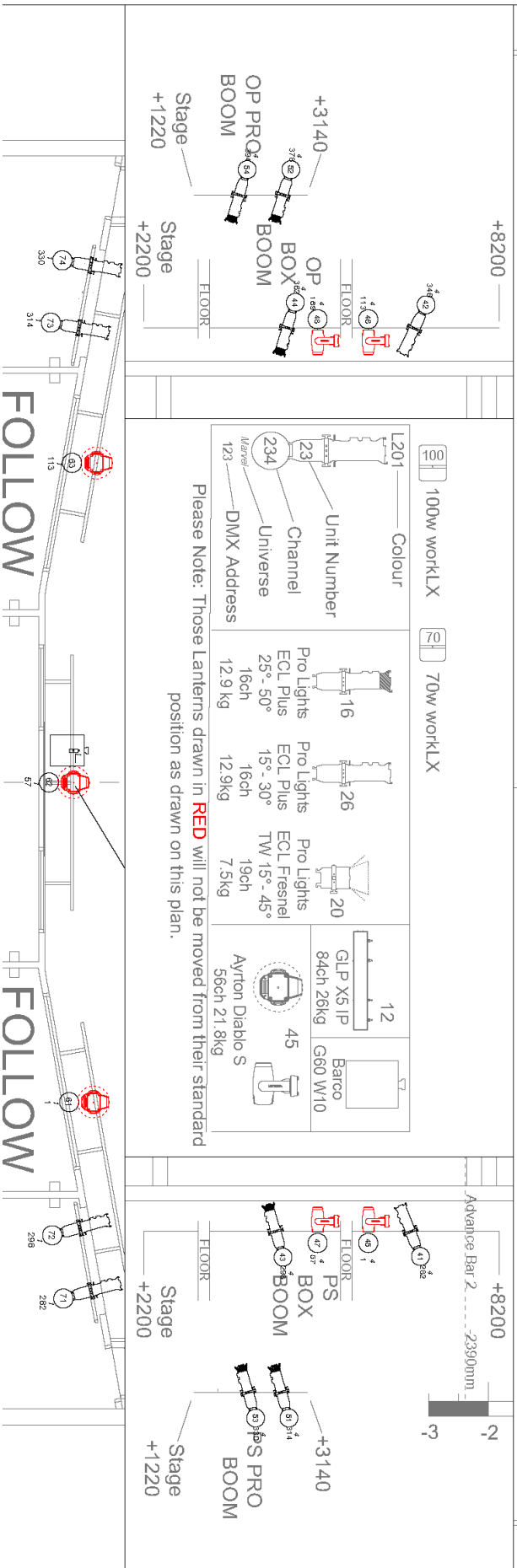
Not Moveable



BRIDGE 1 LX bar @ Stage + 9418mm - 5783mm from back of Proscenium
MIRROR BALL MOTOR - Universe 41



BRIDGE 2 LX bar @ Stage + 9218mm - 10526mm from back of Proscenium



cess
adder

