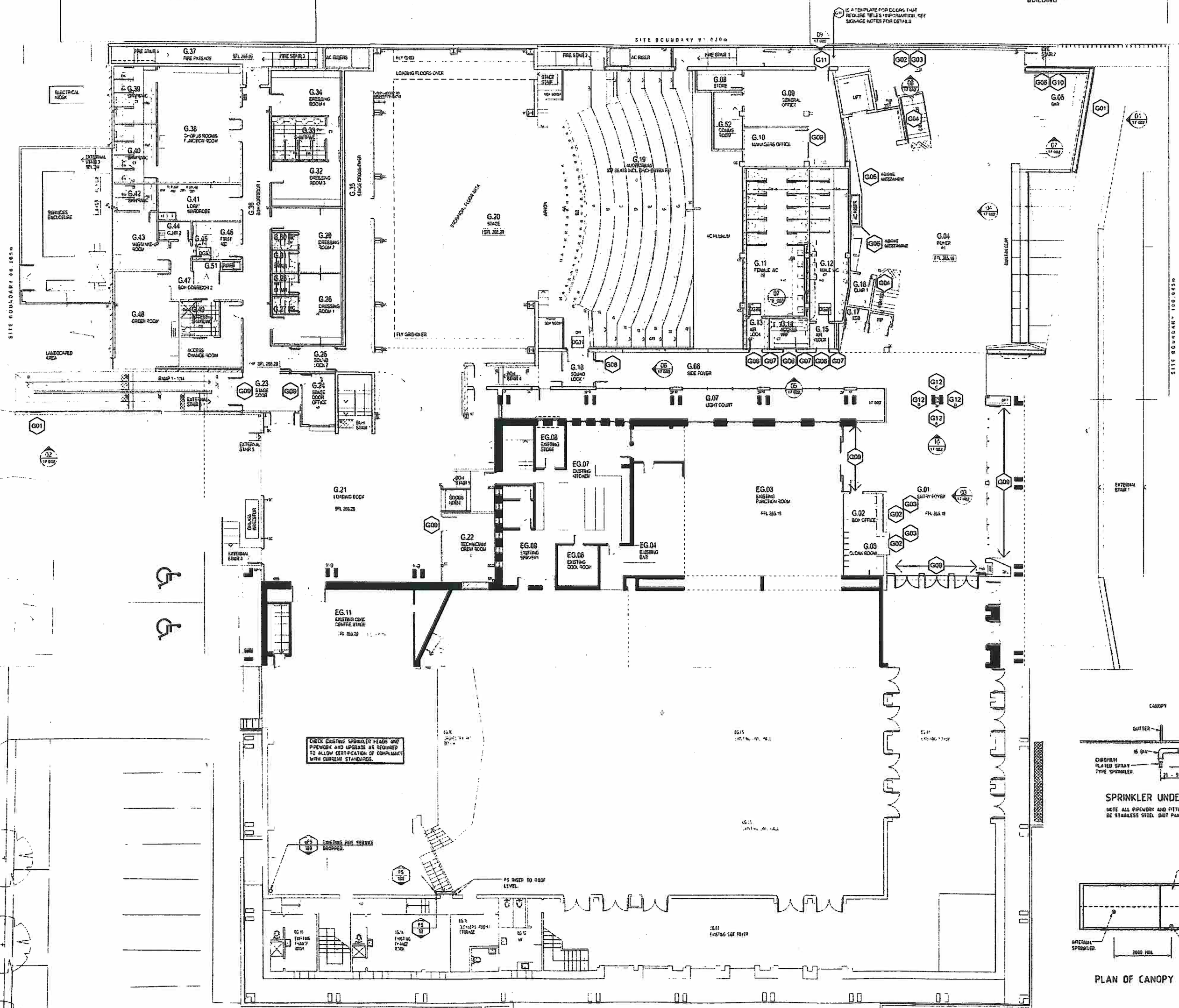


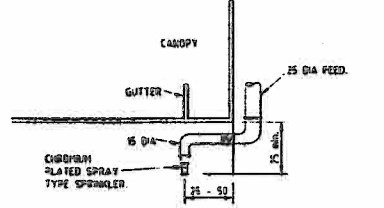
EXISTING APARTMENT BUILDING

EXISTING COMMERCIAL BUILDING

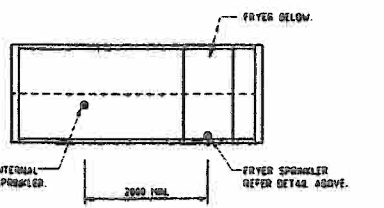


- REVISIONS**
- 1. REVISIONS TO BE MADE TO THE DRAWING AS NOTED ON THE REVISION SHEET.
 - 2. REVISIONS TO BE MADE TO THE DRAWING AS NOTED ON THE REVISION SHEET.
 - 3. REVISIONS TO BE MADE TO THE DRAWING AS NOTED ON THE REVISION SHEET.
 - 4. REVISIONS TO BE MADE TO THE DRAWING AS NOTED ON THE REVISION SHEET.
 - 5. REVISIONS TO BE MADE TO THE DRAWING AS NOTED ON THE REVISION SHEET.
 - 6. REVISIONS TO BE MADE TO THE DRAWING AS NOTED ON THE REVISION SHEET.
 - 7. REVISIONS TO BE MADE TO THE DRAWING AS NOTED ON THE REVISION SHEET.
 - 8. REVISIONS TO BE MADE TO THE DRAWING AS NOTED ON THE REVISION SHEET.
 - 9. REVISIONS TO BE MADE TO THE DRAWING AS NOTED ON THE REVISION SHEET.
 - 10. REVISIONS TO BE MADE TO THE DRAWING AS NOTED ON THE REVISION SHEET.
 - 11. REVISIONS TO BE MADE TO THE DRAWING AS NOTED ON THE REVISION SHEET.
 - 12. REVISIONS TO BE MADE TO THE DRAWING AS NOTED ON THE REVISION SHEET.
 - 13. REVISIONS TO BE MADE TO THE DRAWING AS NOTED ON THE REVISION SHEET.
 - 14. REVISIONS TO BE MADE TO THE DRAWING AS NOTED ON THE REVISION SHEET.
 - 15. REVISIONS TO BE MADE TO THE DRAWING AS NOTED ON THE REVISION SHEET.
 - 16. REVISIONS TO BE MADE TO THE DRAWING AS NOTED ON THE REVISION SHEET.
 - 17. REVISIONS TO BE MADE TO THE DRAWING AS NOTED ON THE REVISION SHEET.
 - 18. REVISIONS TO BE MADE TO THE DRAWING AS NOTED ON THE REVISION SHEET.
 - 19. REVISIONS TO BE MADE TO THE DRAWING AS NOTED ON THE REVISION SHEET.
 - 20. REVISIONS TO BE MADE TO THE DRAWING AS NOTED ON THE REVISION SHEET.

- GENERAL NOTES**
- 1. ALL WORK SHALL BE IN ACCORDANCE WITH THE LATEST EDITIONS OF THE NATIONAL BUILDING REGULATIONS AND THE NATIONAL FIRE PROTECTION ASSOCIATION (NFPA) 101, LIFE SAFETY CODE.
 - 2. ALL WORK SHALL BE IN ACCORDANCE WITH THE LATEST EDITIONS OF THE NATIONAL BUILDING REGULATIONS AND THE NATIONAL FIRE PROTECTION ASSOCIATION (NFPA) 101, LIFE SAFETY CODE.
 - 3. ALL WORK SHALL BE IN ACCORDANCE WITH THE LATEST EDITIONS OF THE NATIONAL BUILDING REGULATIONS AND THE NATIONAL FIRE PROTECTION ASSOCIATION (NFPA) 101, LIFE SAFETY CODE.
 - 4. ALL WORK SHALL BE IN ACCORDANCE WITH THE LATEST EDITIONS OF THE NATIONAL BUILDING REGULATIONS AND THE NATIONAL FIRE PROTECTION ASSOCIATION (NFPA) 101, LIFE SAFETY CODE.
 - 5. ALL WORK SHALL BE IN ACCORDANCE WITH THE LATEST EDITIONS OF THE NATIONAL BUILDING REGULATIONS AND THE NATIONAL FIRE PROTECTION ASSOCIATION (NFPA) 101, LIFE SAFETY CODE.
 - 6. ALL WORK SHALL BE IN ACCORDANCE WITH THE LATEST EDITIONS OF THE NATIONAL BUILDING REGULATIONS AND THE NATIONAL FIRE PROTECTION ASSOCIATION (NFPA) 101, LIFE SAFETY CODE.
 - 7. ALL WORK SHALL BE IN ACCORDANCE WITH THE LATEST EDITIONS OF THE NATIONAL BUILDING REGULATIONS AND THE NATIONAL FIRE PROTECTION ASSOCIATION (NFPA) 101, LIFE SAFETY CODE.
 - 8. ALL WORK SHALL BE IN ACCORDANCE WITH THE LATEST EDITIONS OF THE NATIONAL BUILDING REGULATIONS AND THE NATIONAL FIRE PROTECTION ASSOCIATION (NFPA) 101, LIFE SAFETY CODE.
 - 9. ALL WORK SHALL BE IN ACCORDANCE WITH THE LATEST EDITIONS OF THE NATIONAL BUILDING REGULATIONS AND THE NATIONAL FIRE PROTECTION ASSOCIATION (NFPA) 101, LIFE SAFETY CODE.
 - 10. ALL WORK SHALL BE IN ACCORDANCE WITH THE LATEST EDITIONS OF THE NATIONAL BUILDING REGULATIONS AND THE NATIONAL FIRE PROTECTION ASSOCIATION (NFPA) 101, LIFE SAFETY CODE.
 - 11. ALL WORK SHALL BE IN ACCORDANCE WITH THE LATEST EDITIONS OF THE NATIONAL BUILDING REGULATIONS AND THE NATIONAL FIRE PROTECTION ASSOCIATION (NFPA) 101, LIFE SAFETY CODE.
 - 12. ALL WORK SHALL BE IN ACCORDANCE WITH THE LATEST EDITIONS OF THE NATIONAL BUILDING REGULATIONS AND THE NATIONAL FIRE PROTECTION ASSOCIATION (NFPA) 101, LIFE SAFETY CODE.
 - 13. ALL WORK SHALL BE IN ACCORDANCE WITH THE LATEST EDITIONS OF THE NATIONAL BUILDING REGULATIONS AND THE NATIONAL FIRE PROTECTION ASSOCIATION (NFPA) 101, LIFE SAFETY CODE.
 - 14. ALL WORK SHALL BE IN ACCORDANCE WITH THE LATEST EDITIONS OF THE NATIONAL BUILDING REGULATIONS AND THE NATIONAL FIRE PROTECTION ASSOCIATION (NFPA) 101, LIFE SAFETY CODE.
 - 15. ALL WORK SHALL BE IN ACCORDANCE WITH THE LATEST EDITIONS OF THE NATIONAL BUILDING REGULATIONS AND THE NATIONAL FIRE PROTECTION ASSOCIATION (NFPA) 101, LIFE SAFETY CODE.
 - 16. ALL WORK SHALL BE IN ACCORDANCE WITH THE LATEST EDITIONS OF THE NATIONAL BUILDING REGULATIONS AND THE NATIONAL FIRE PROTECTION ASSOCIATION (NFPA) 101, LIFE SAFETY CODE.
 - 17. ALL WORK SHALL BE IN ACCORDANCE WITH THE LATEST EDITIONS OF THE NATIONAL BUILDING REGULATIONS AND THE NATIONAL FIRE PROTECTION ASSOCIATION (NFPA) 101, LIFE SAFETY CODE.
 - 18. ALL WORK SHALL BE IN ACCORDANCE WITH THE LATEST EDITIONS OF THE NATIONAL BUILDING REGULATIONS AND THE NATIONAL FIRE PROTECTION ASSOCIATION (NFPA) 101, LIFE SAFETY CODE.
 - 19. ALL WORK SHALL BE IN ACCORDANCE WITH THE LATEST EDITIONS OF THE NATIONAL BUILDING REGULATIONS AND THE NATIONAL FIRE PROTECTION ASSOCIATION (NFPA) 101, LIFE SAFETY CODE.
 - 20. ALL WORK SHALL BE IN ACCORDANCE WITH THE LATEST EDITIONS OF THE NATIONAL BUILDING REGULATIONS AND THE NATIONAL FIRE PROTECTION ASSOCIATION (NFPA) 101, LIFE SAFETY CODE.



SPRINKLER UNDER HOOD DETAIL
NOTE ALL PIPEWORK AND FITTINGS TO BE STAINLESS STEEL, DOT PAINTED



PLAN OF CANOPY

CHECK EXISTING SPRINKLER LEADS AND PIPEWORK AND UPGRADE AS REQUIRED TO ALLOW CERTIFICATION OF COMPLIANCE WITH CURRENT STANDARDS.

EXISTING FIRE SERVICE DROPPER.

PS RISER TO ROOF LEVEL.

EXISTING SEE FLOOR

